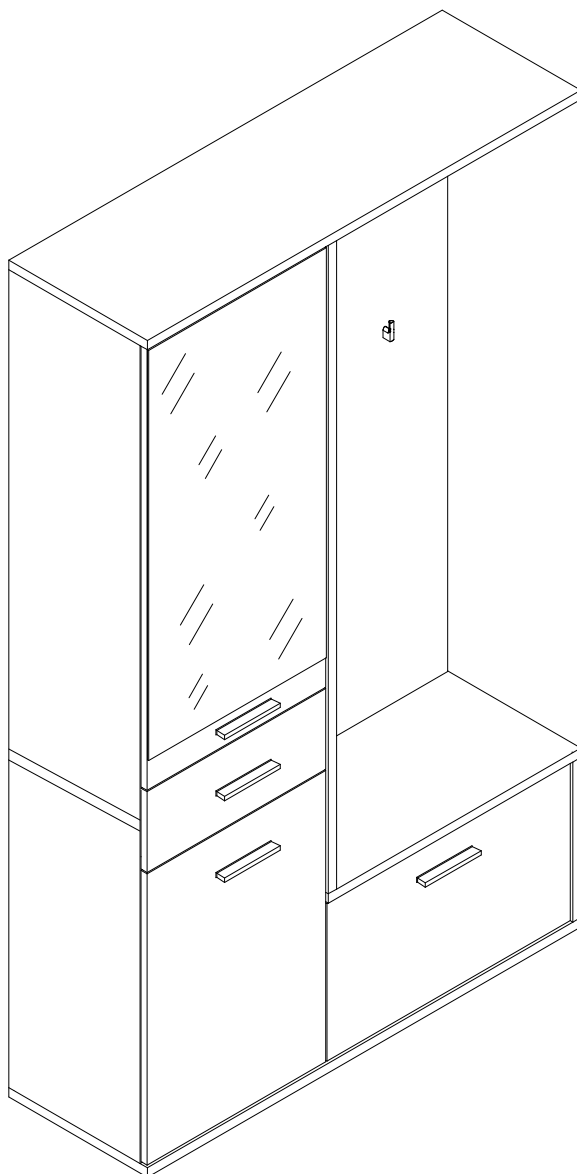
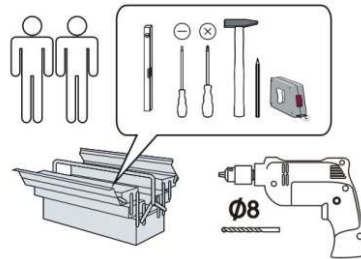
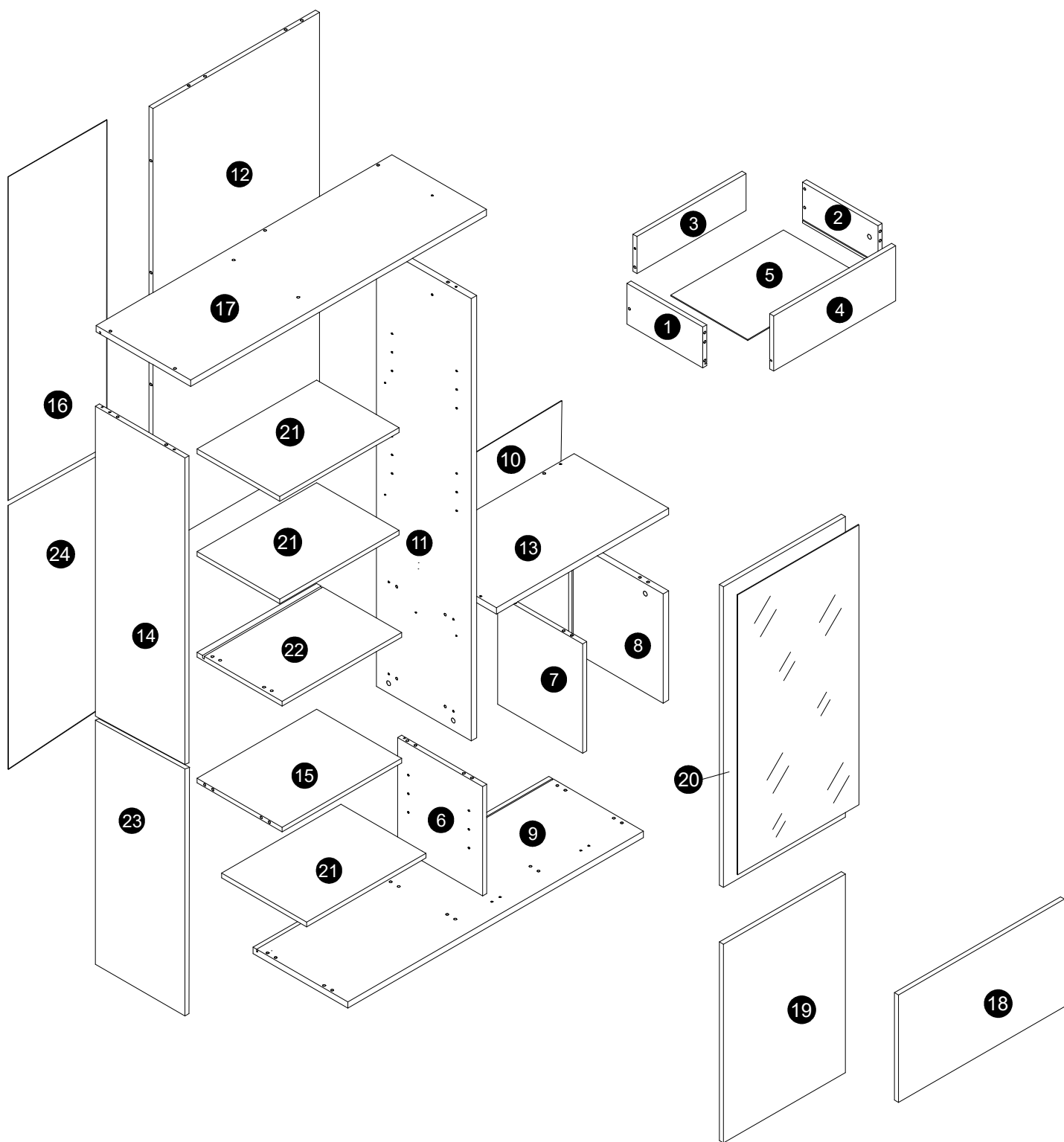
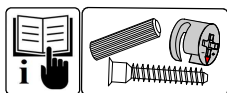
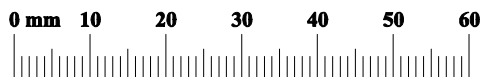


wyprodukowano dla / made for / produziert für  
**BEGA GRUPPE**  
producent: **MEBLE OKMED POLAND**

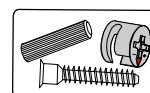


KK1 1	K1 5	K2 14	ZK 6	KSK1 1	KD1 32	KD2 4
ZM1A 22	ZM1B 18	TPP3 2	ZM1 22	PP 12	SS6 6	WV1 7
ZP 5	Z1P 5	ZP 2	Z2P 2	W4 14	S1 15	UST 4
W1 7	W11 8	W12 4	W7 14	W9 3	PQ3 1	PQ4 1
KS1 2	KRW1 2	U99 4	WU 8	WG5 1	SG15 1	

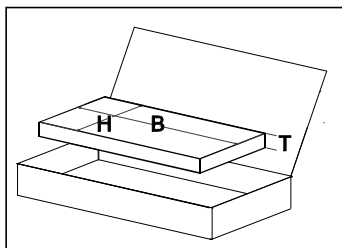


A	1/3			
	B	H	T	
8	375	375	22	x1
9	1172	375	22	x1
11	1518	375	22	x1
13	683	375	22	x1
17	1172	375	22	x1

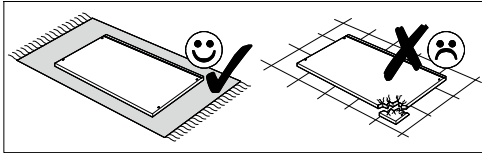


2/3				
	B	H	T	
1	300	140	16	x1
2	300	140	16	x1
3	432	127	16	x1
6	375	355	16	x1
7	375	337	16	x1
21	472	327	16	x3
22	489	355	16	x1
14	1028	355	16	x1
15	472	337	16	x1
23	871	355	16	x1

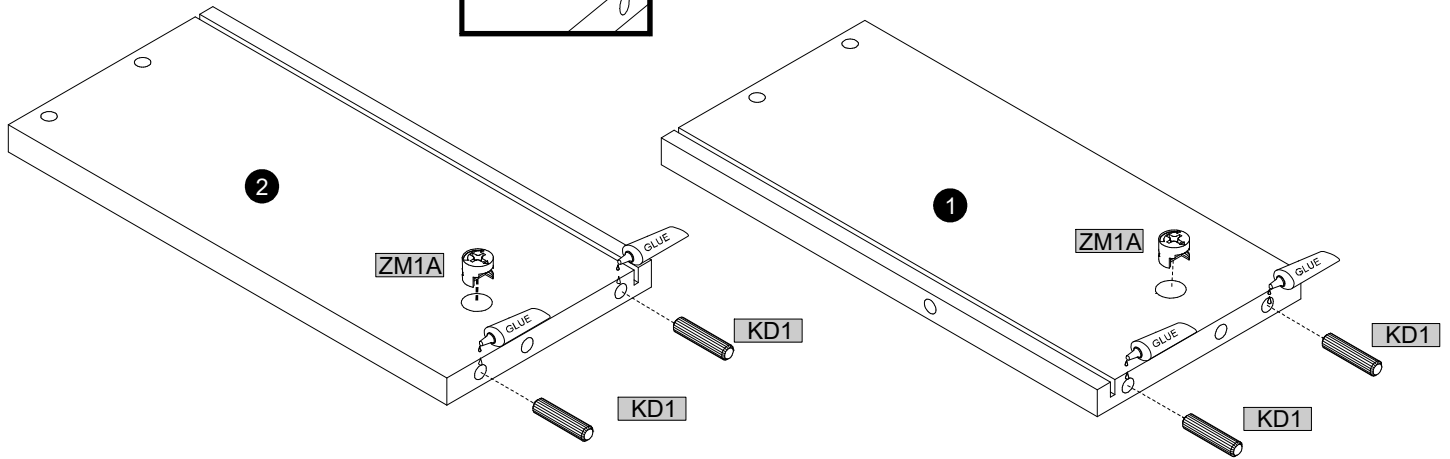
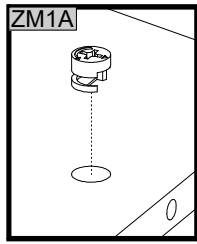
3/3				
	B	H	T	
4	483	189	16	x1
5	446	305	3	x1
10	660	391	3	x1
12	1518	660	16	x1
16	1044	480	3	x1
19	682	483	16	x1
20	1032	483	16	x1
24	879	480	3	x1
18	658	369	16	x1



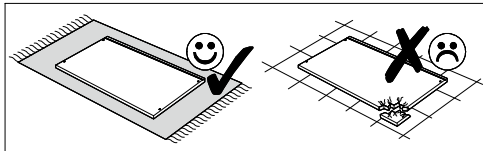
### 01



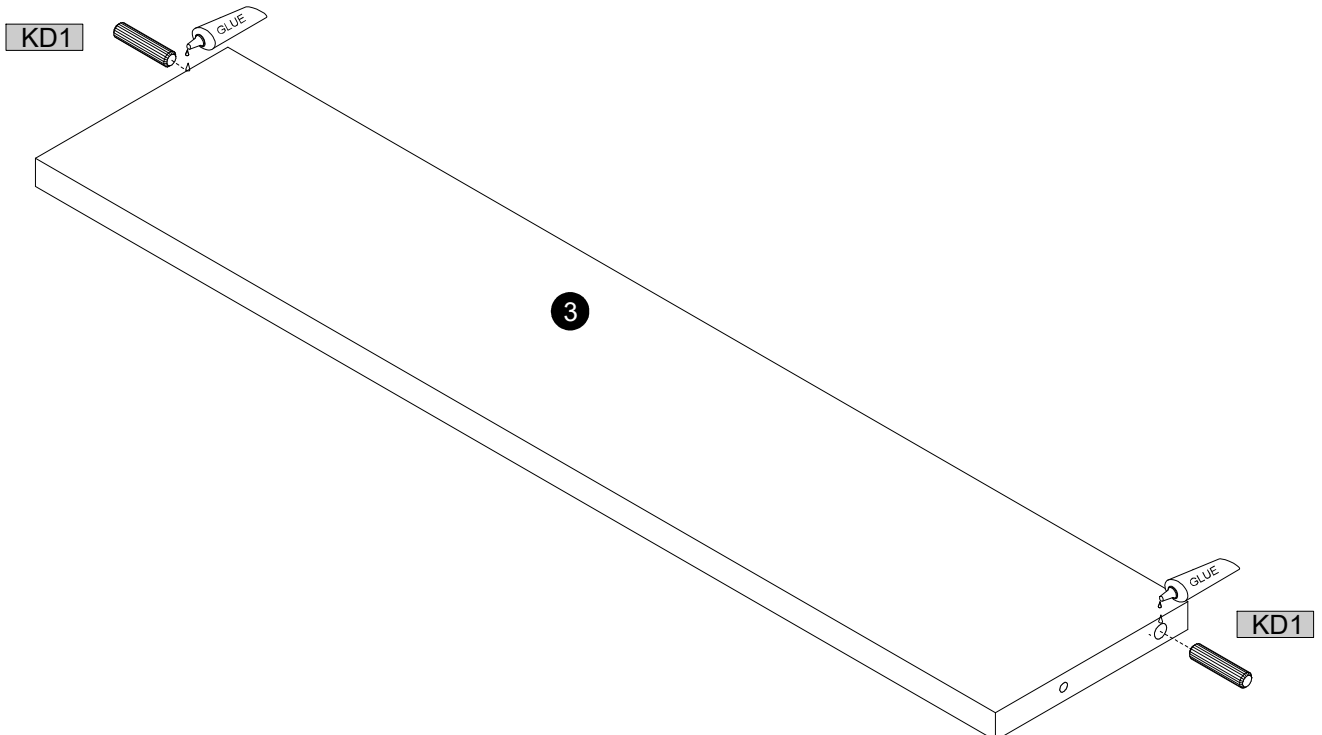
	8x35		8x60				GLUE
KD1	4	<del>KD2</del>	1	ZM1A	2	KSK1	1



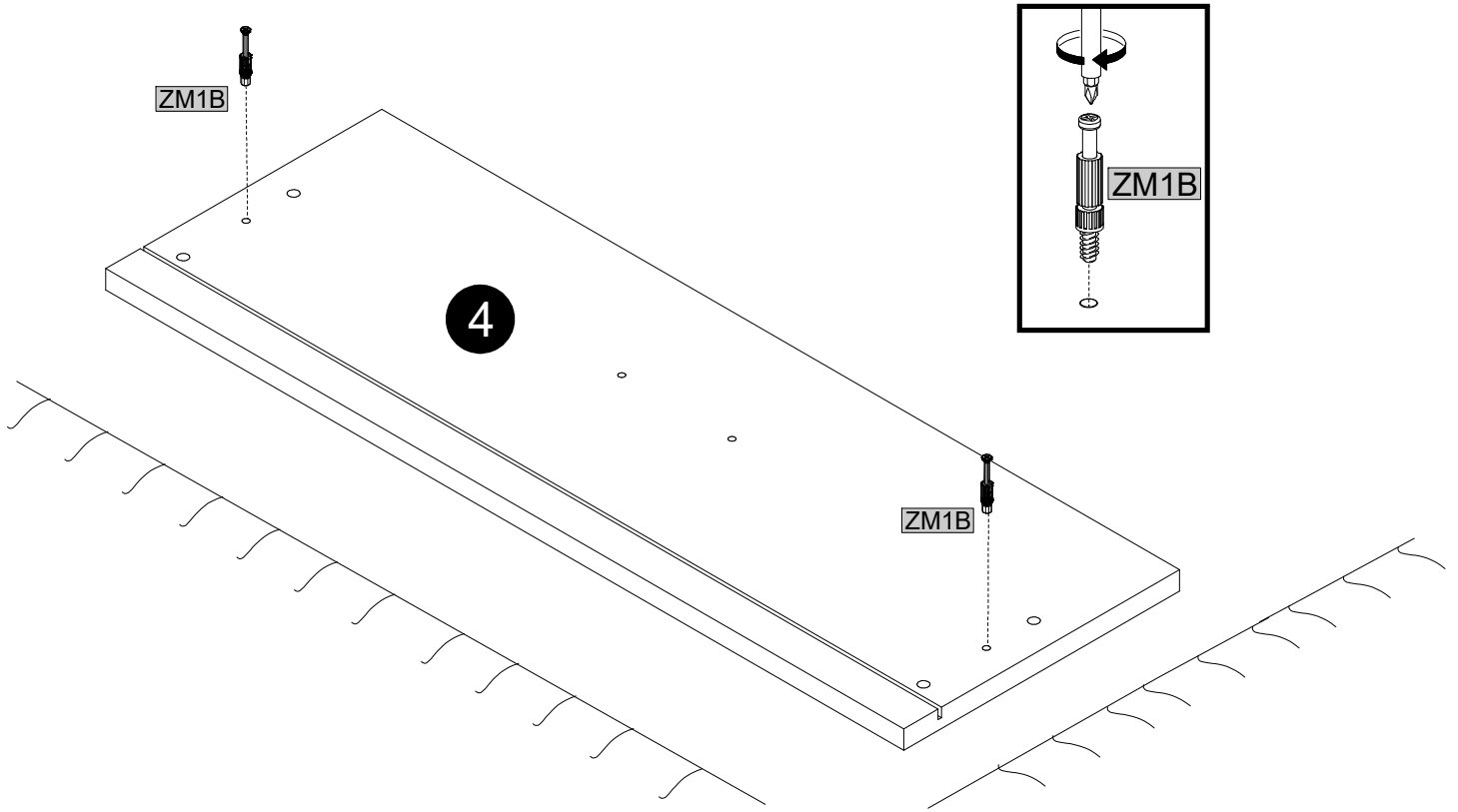
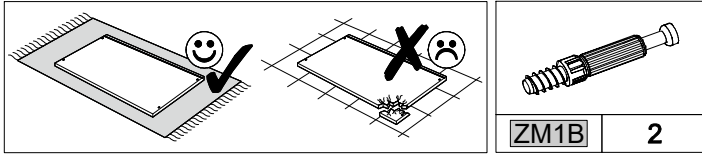
### 02



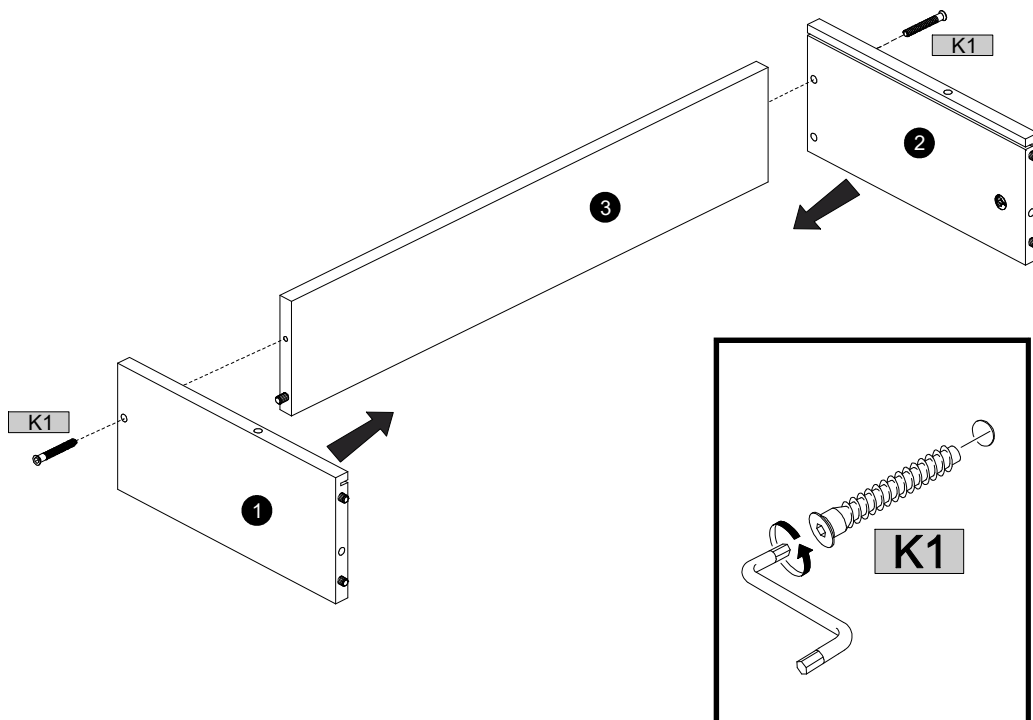
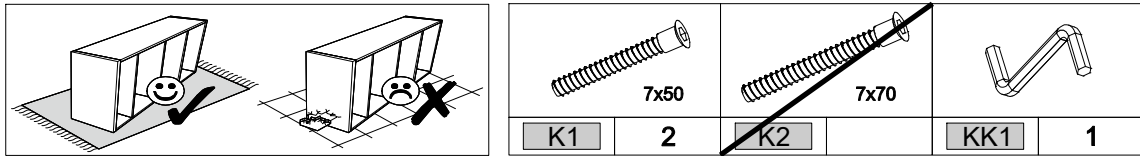
	8x35		8x60		GLUE
KD1	2	<del>KD2</del>	1	KSK1	1



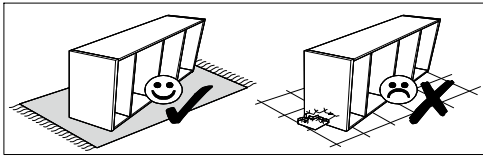
### 03



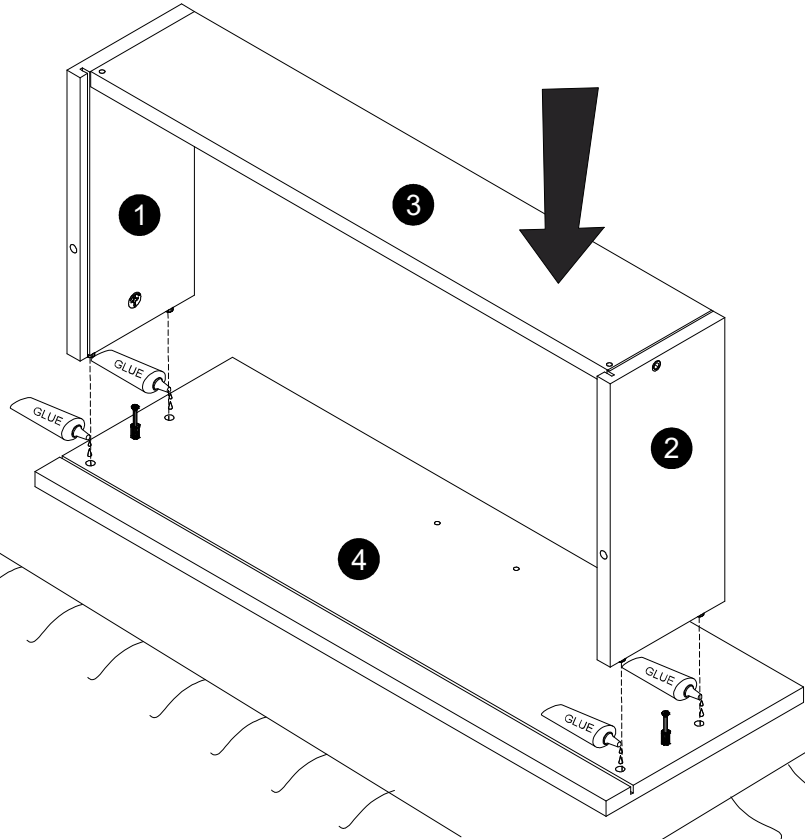
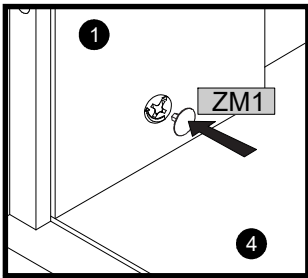
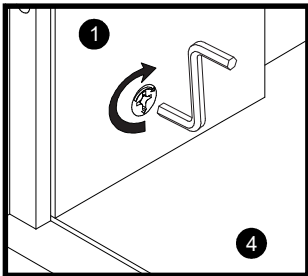
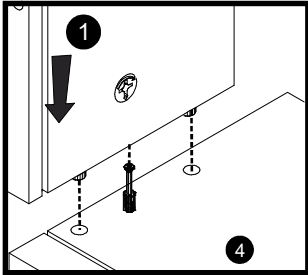
### 04



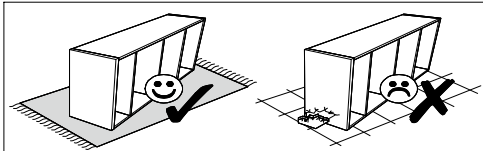
05



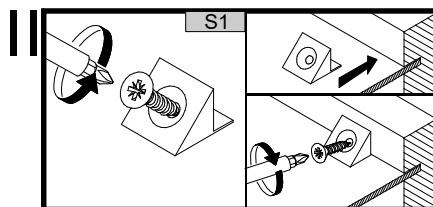
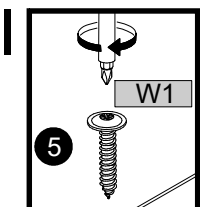
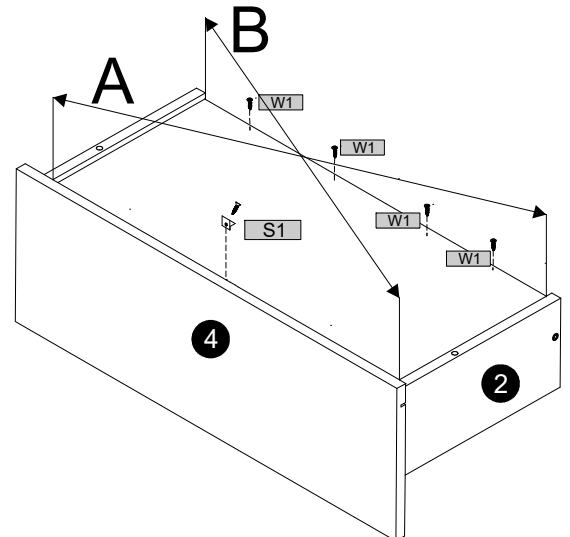
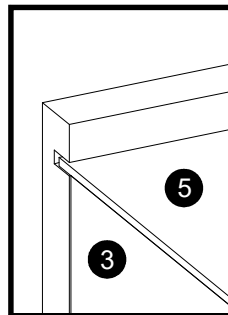
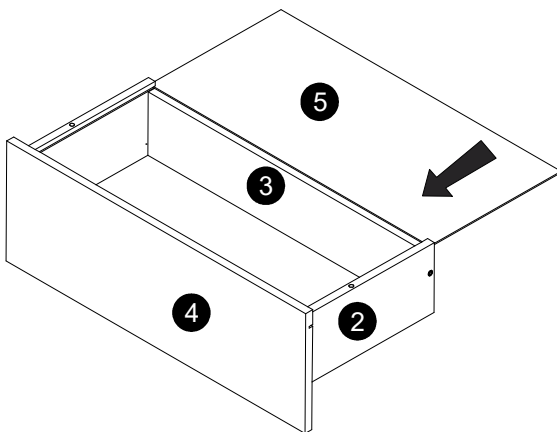
	2		1		1
ZM1		KK1		KSK1	



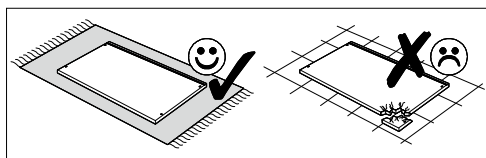
06

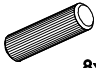

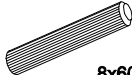



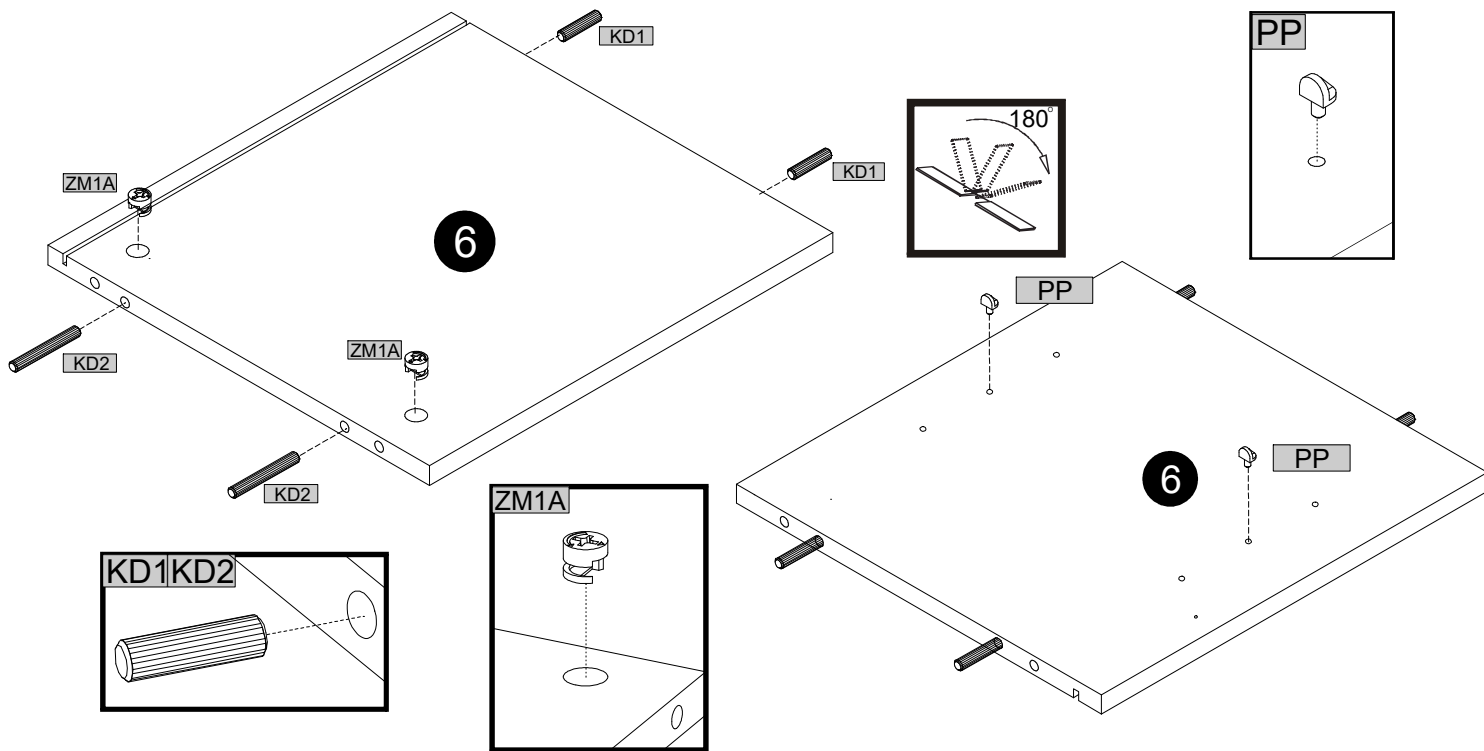
	4		1
W1		S1	



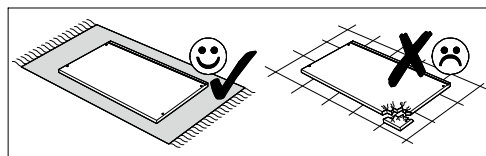
### 07

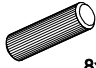
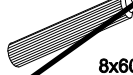

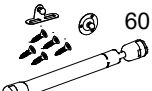


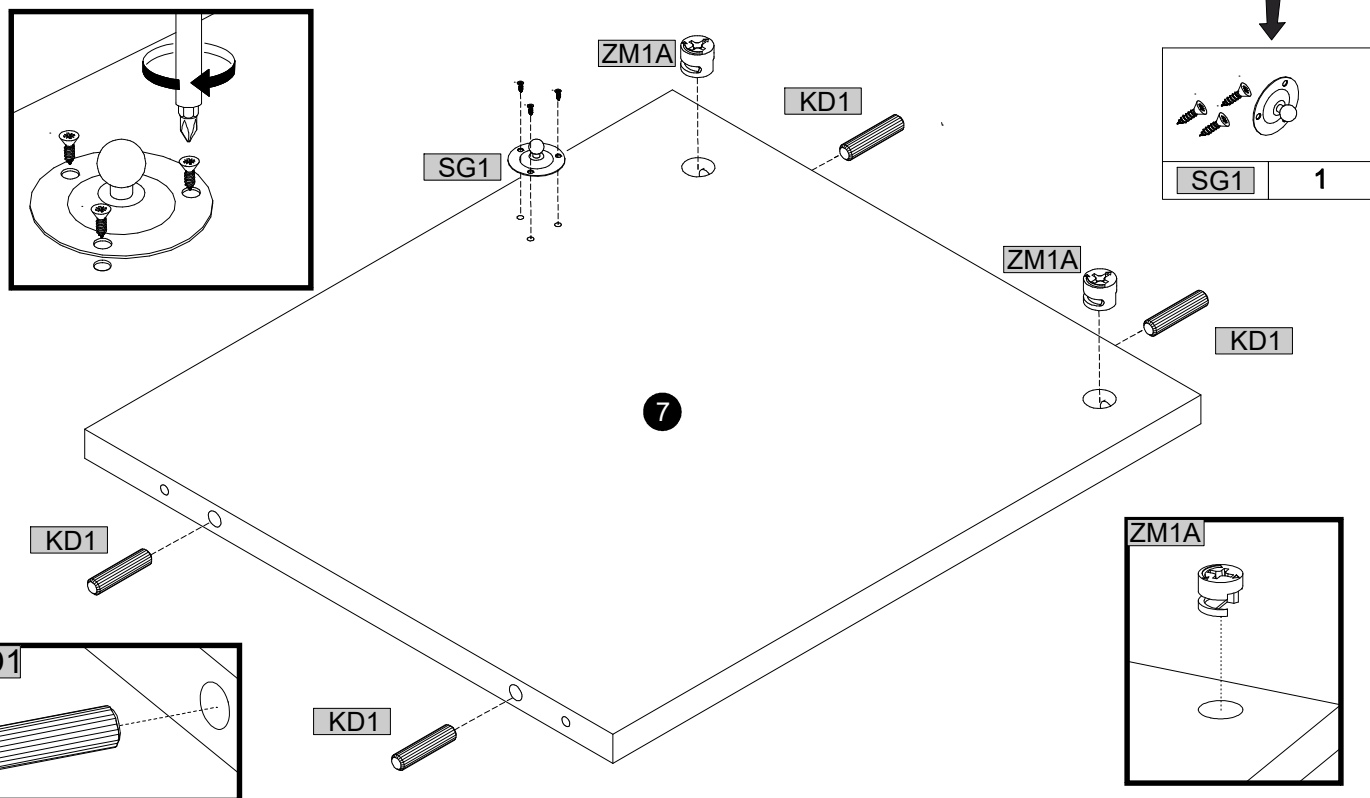
			
8x35		8x60	
KD1	2	ZM1A	2
		KD2	2
			PP
			2



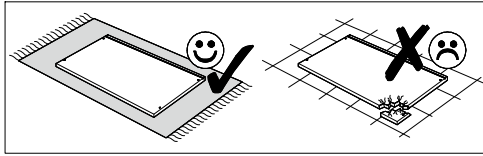
### 08



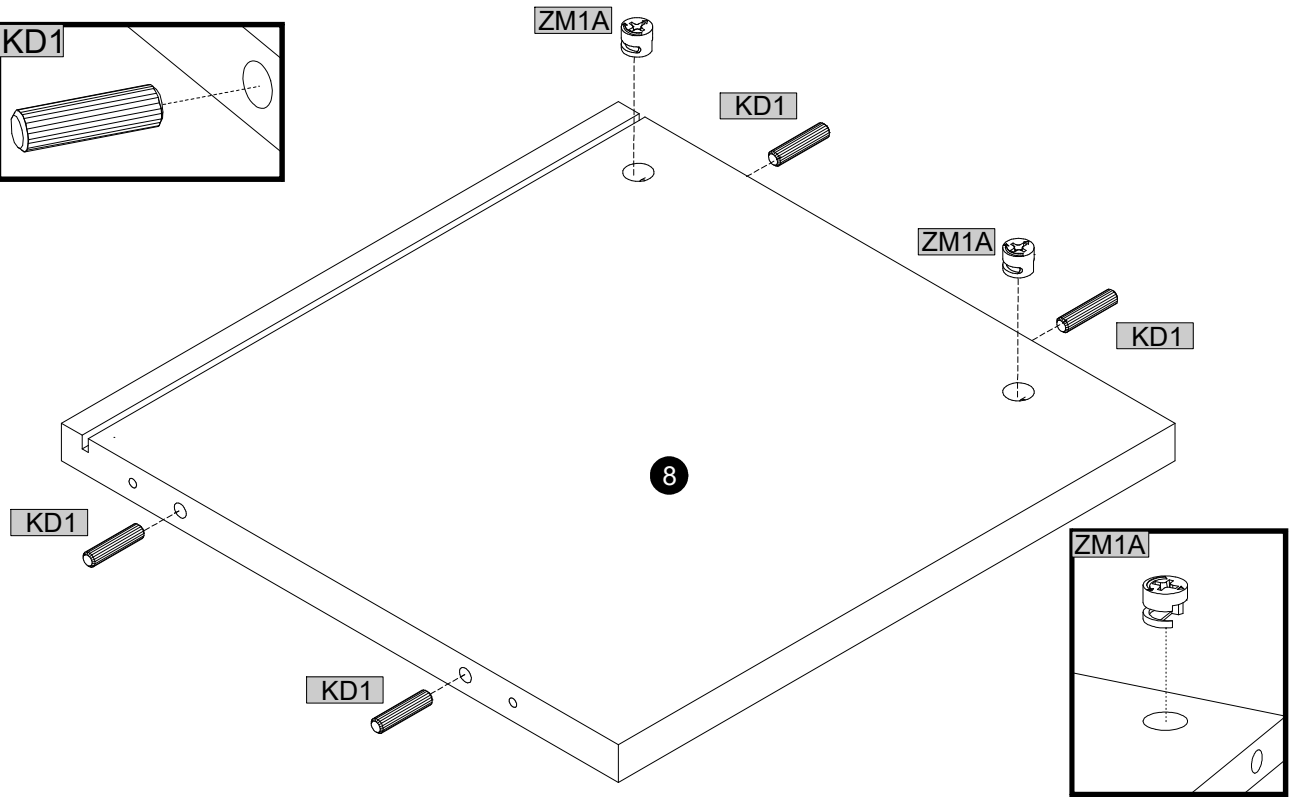
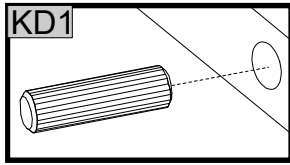
			
8x35	8x60		60N
KD1	<del>KD2</del>	ZM1A	SG15
4	1	2	1



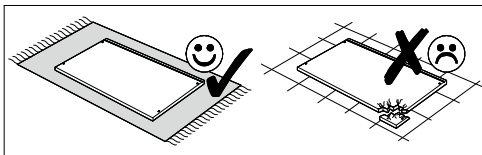
## 09



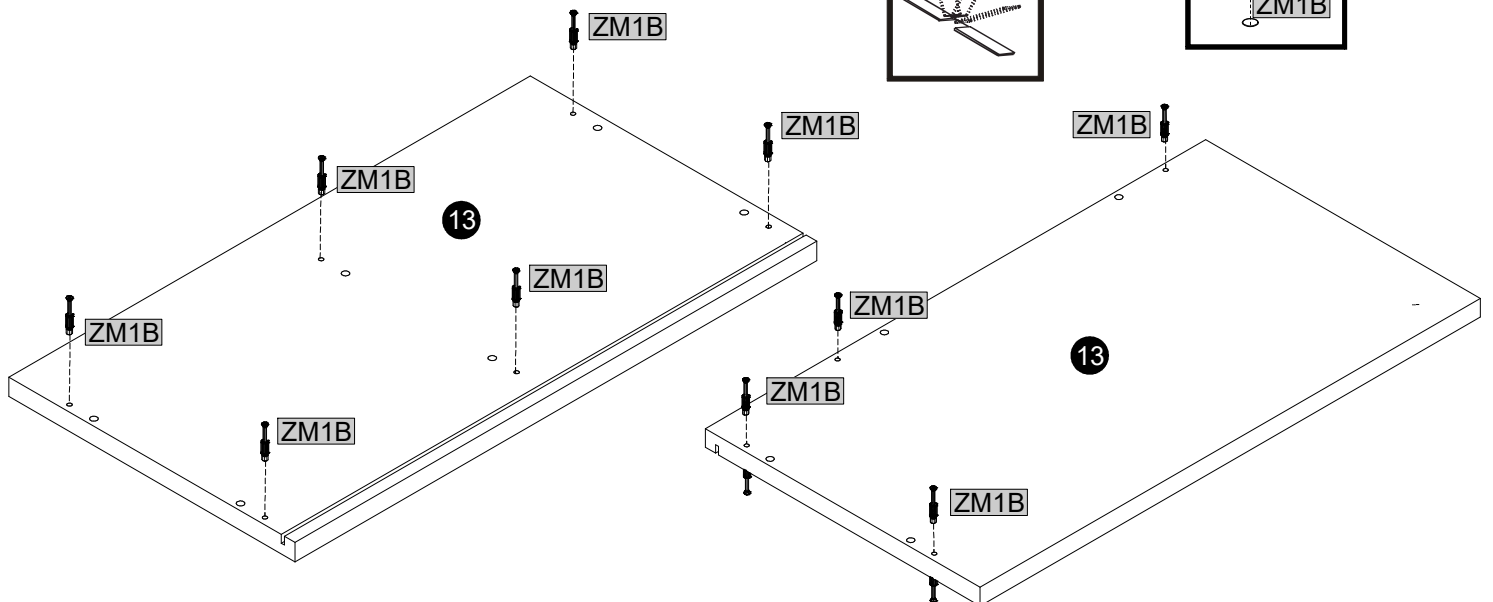
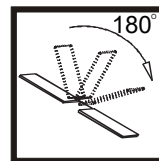
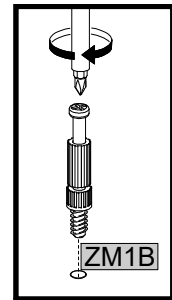
	8x35		8x60		
KD1	4	<del>KD2</del>	<del>1</del>	ZM1A	2



## 10

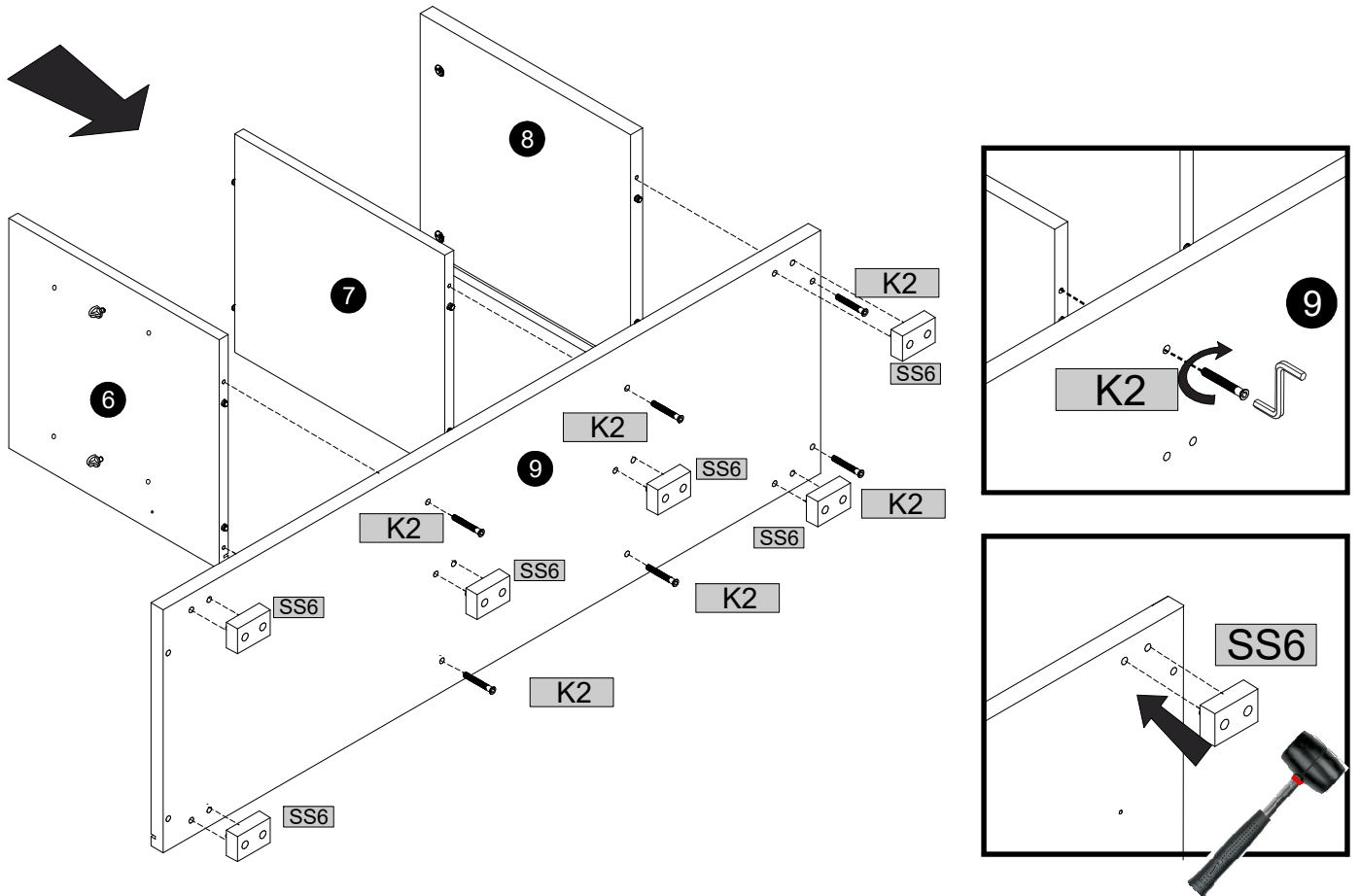
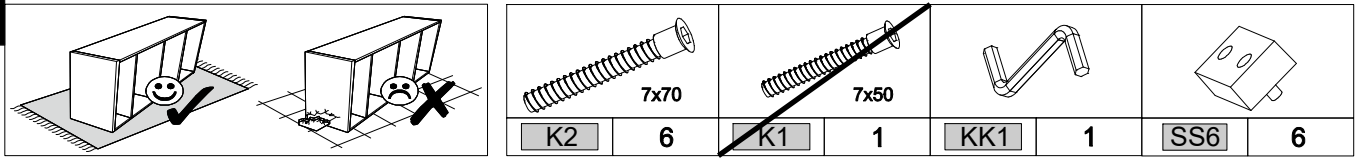


	ZM1B	10
--	------	----

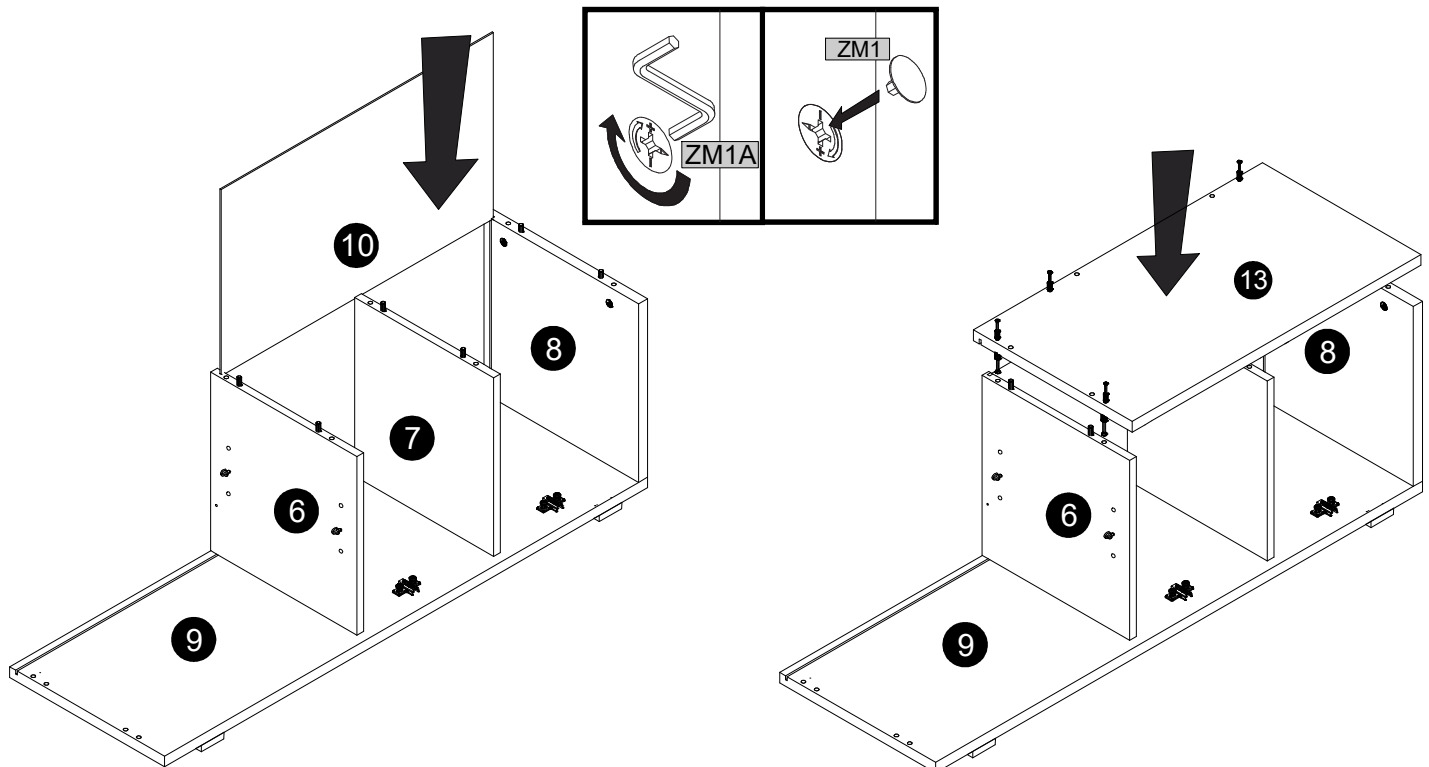
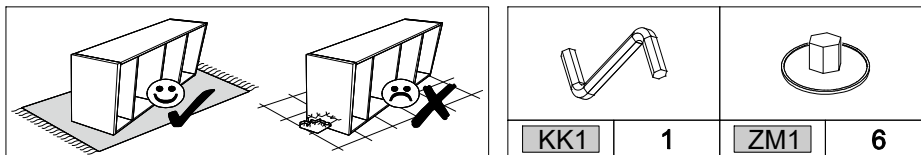




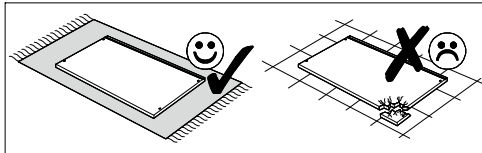
### 11

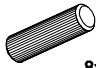

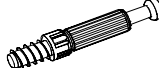
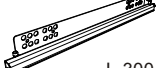


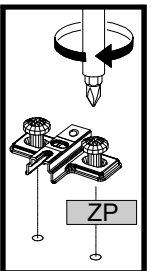
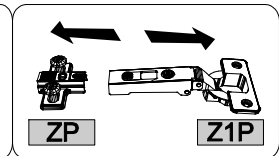
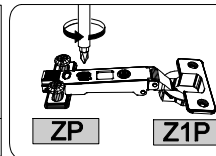
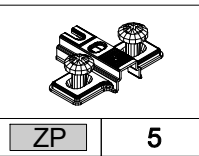
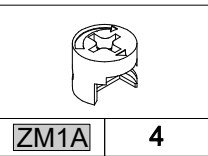
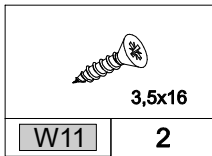
### 12



### 13



	8x35						L-300
KD1	4	PP	6	ZM1B	2	PQ3	1



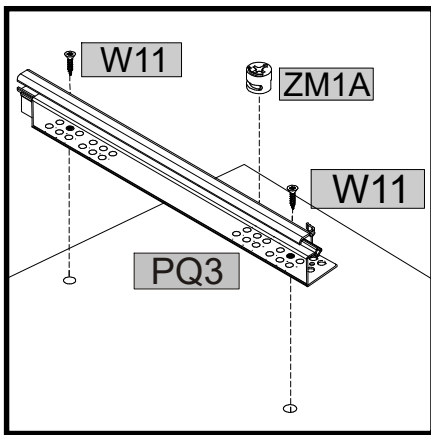
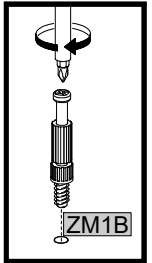
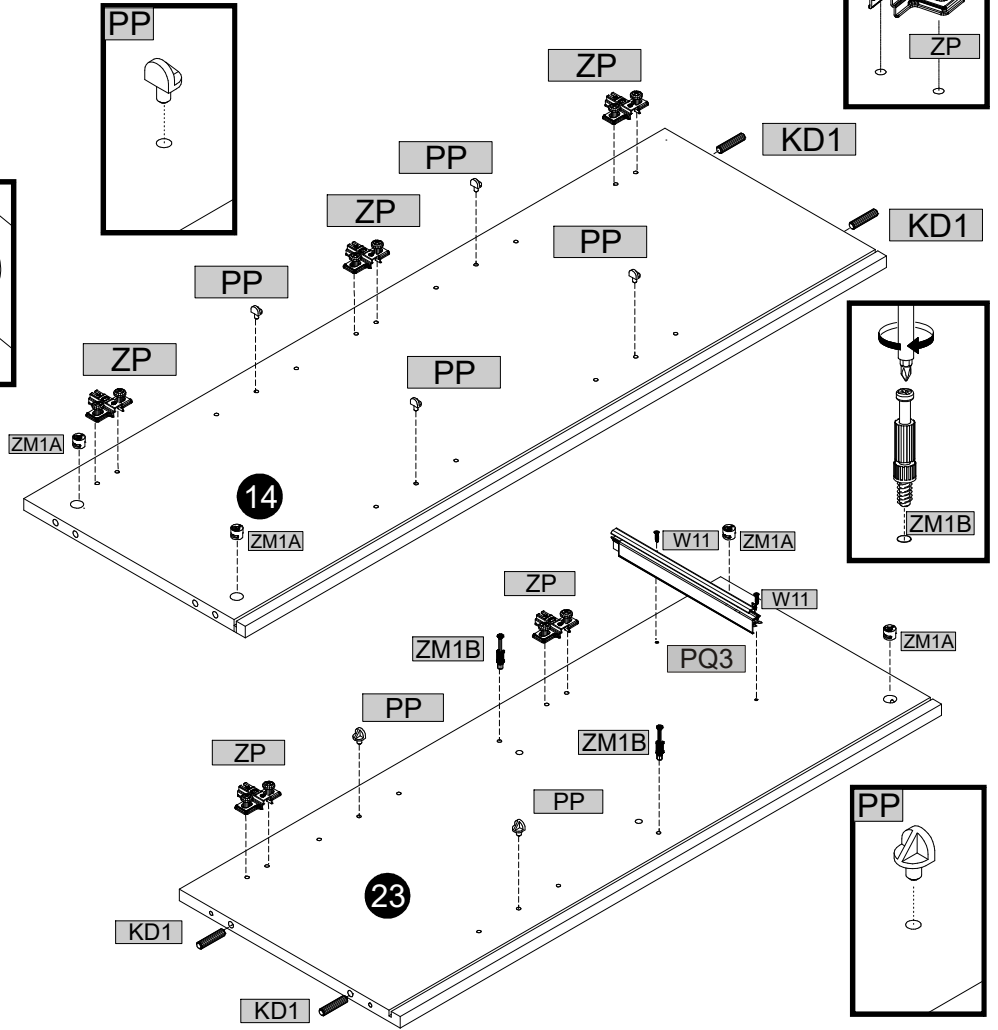
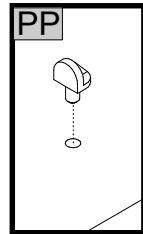
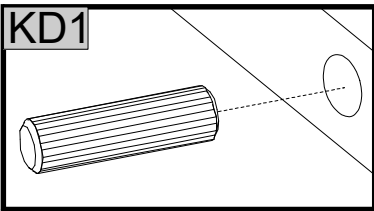
W11	2
-----	---

ZM1A	4
------	---

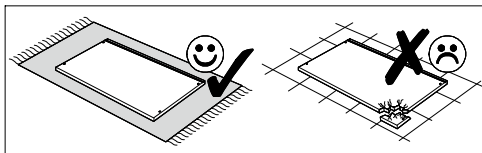
ZP	5
----	---


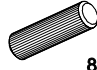

ZP	Z1P
----	-----

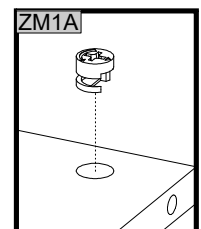
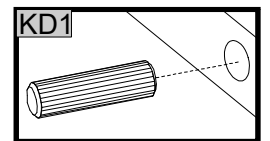
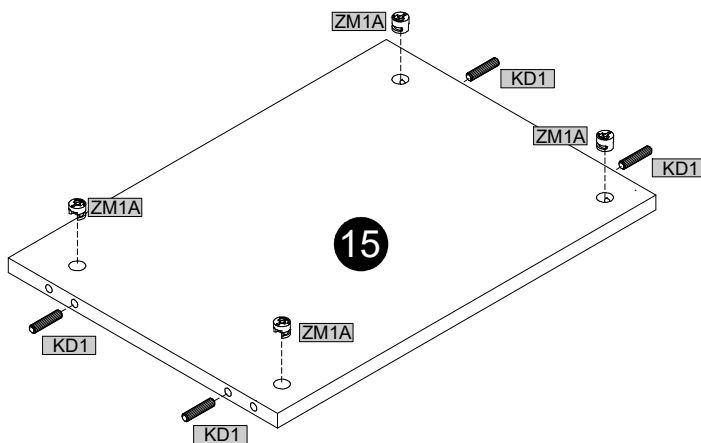
ZP	Z1P
----	-----



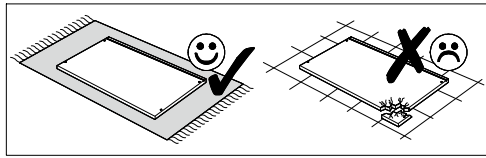
### 14



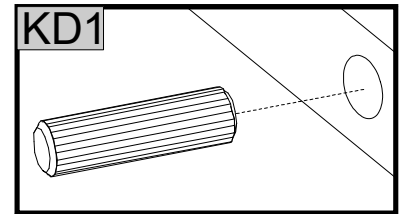
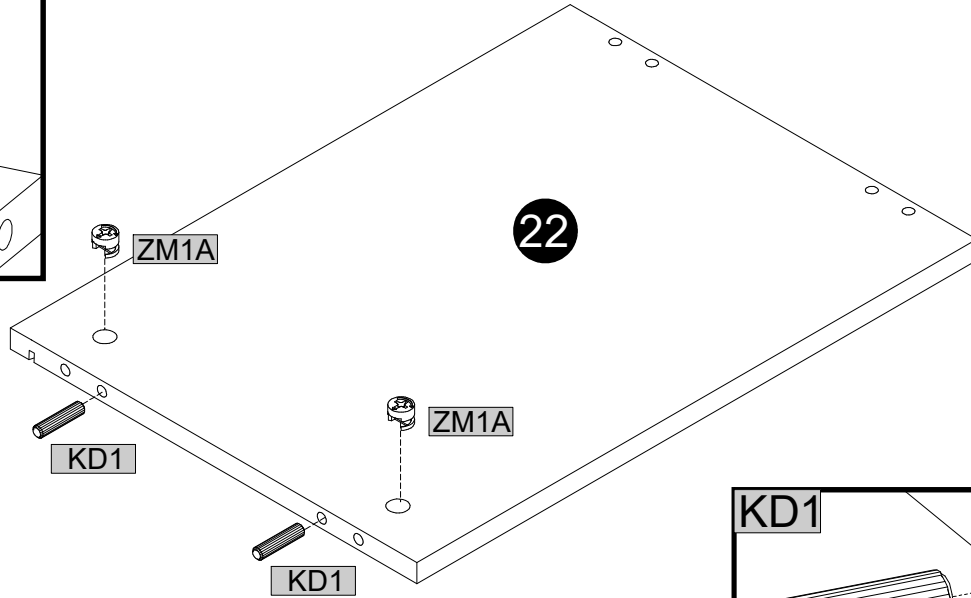
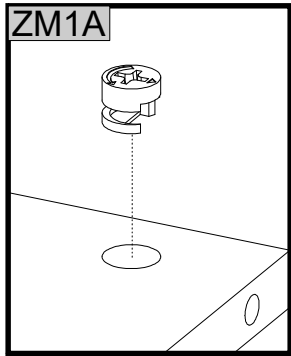
			8x35		8x60
ZM1A	4	KD1	4	<del>KD2</del>	1



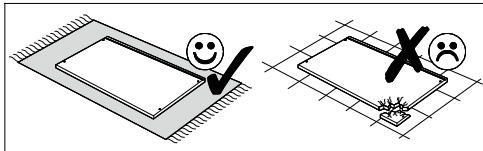
### 15



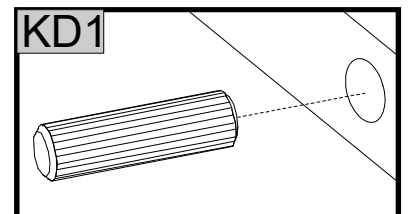
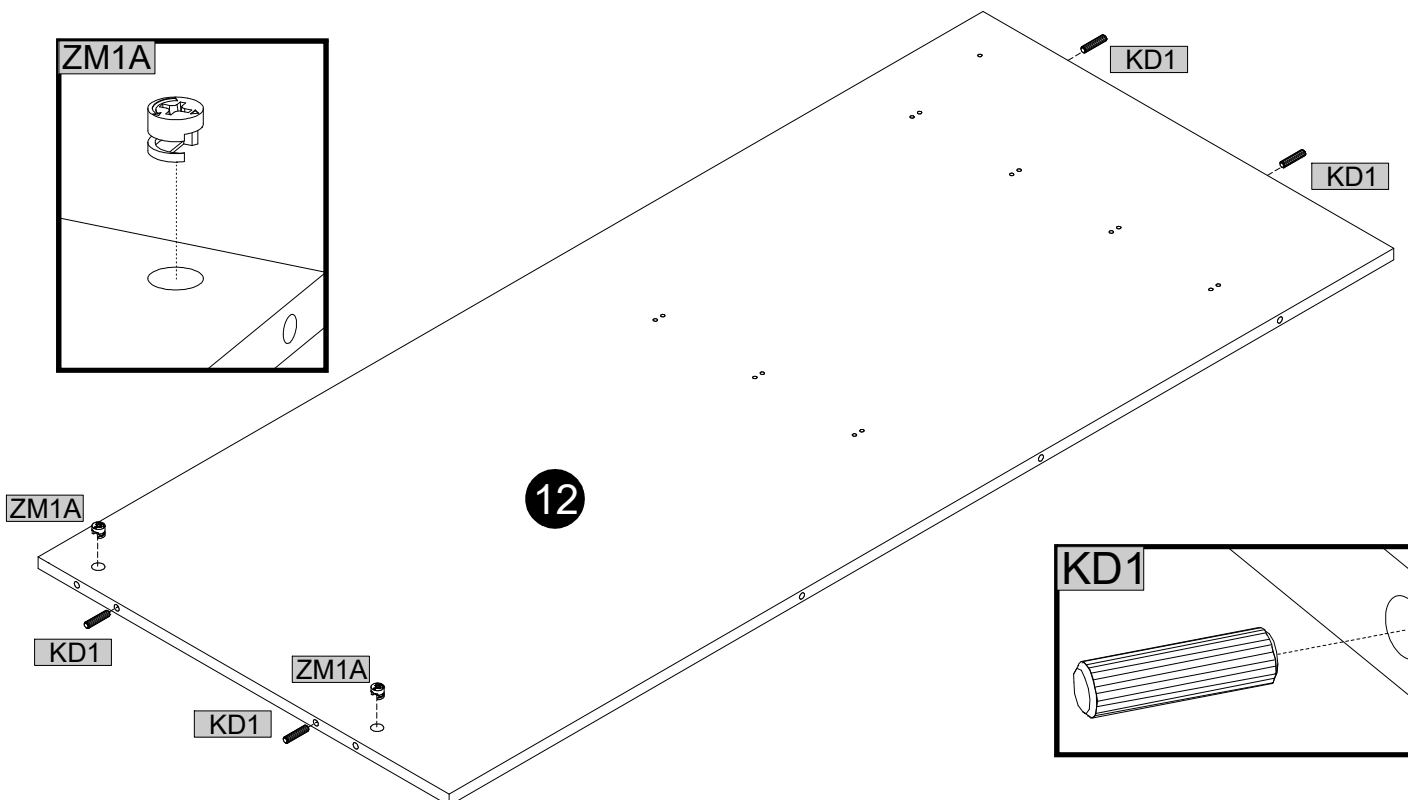
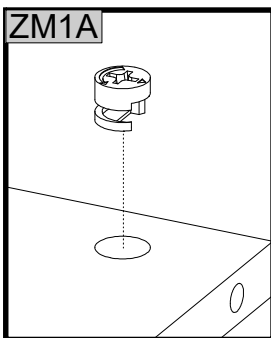
ZM1A	2	KD1	2	<del>KD2</del>	1



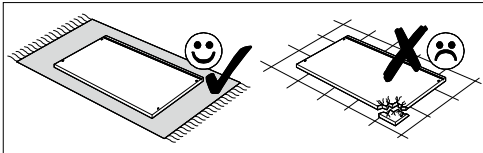
### 16



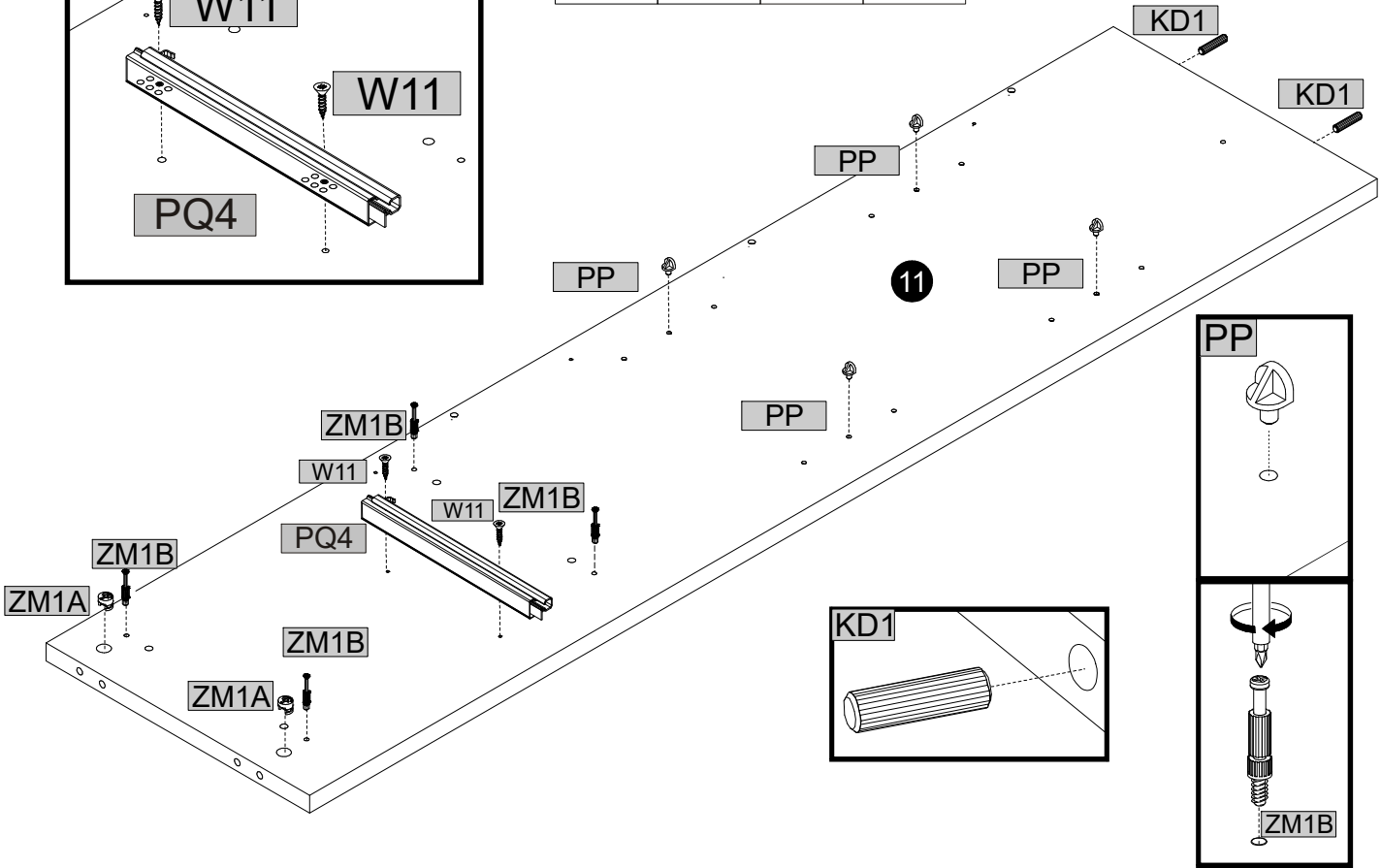
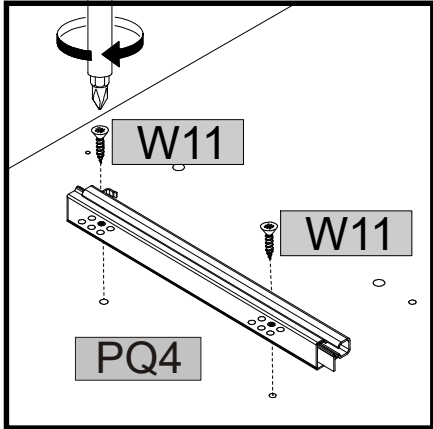
ZM1A	2	KD1	4	<del>KD2</del>	1



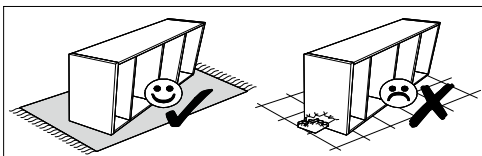
### 17



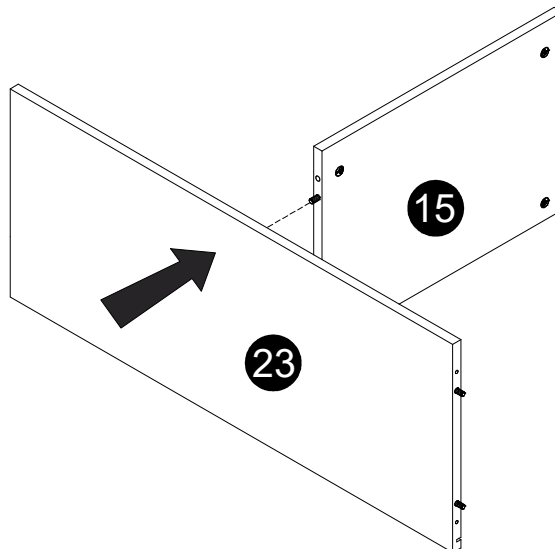
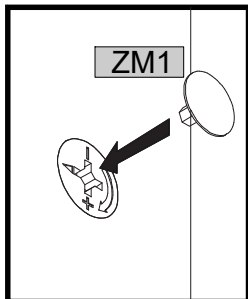
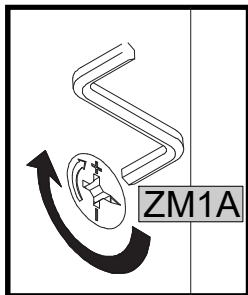
ZM1B	4	ZM1A	2	W11	2	PP	4
KD1	2	PQ4	1				



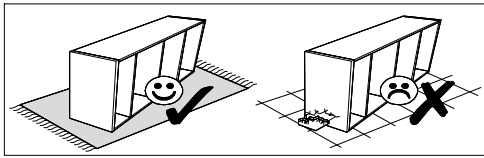
### 18



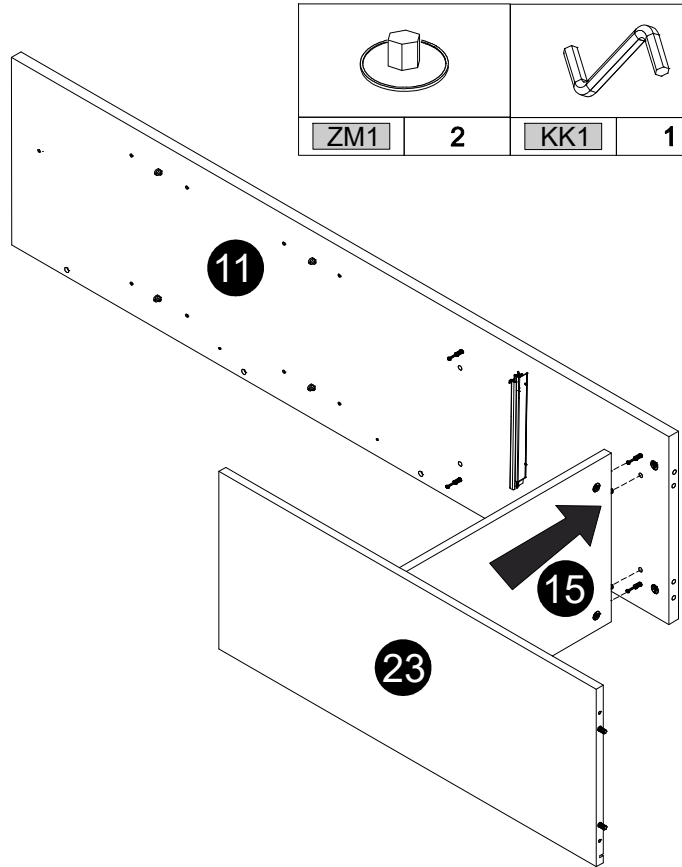
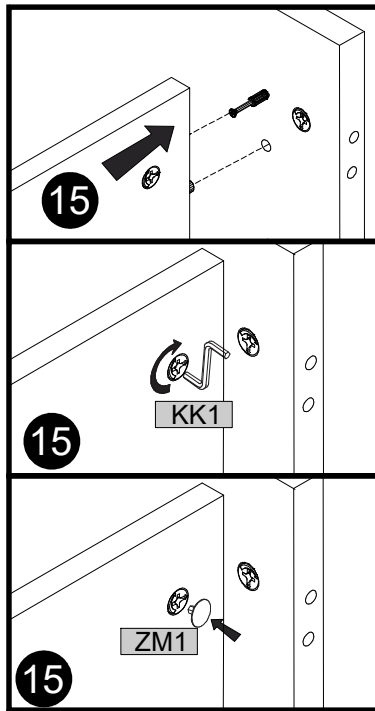
KK1	1	ZM1	2



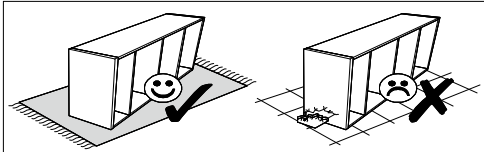
### 19



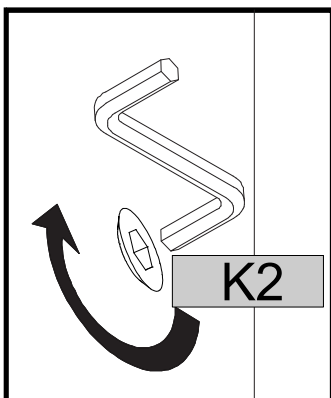
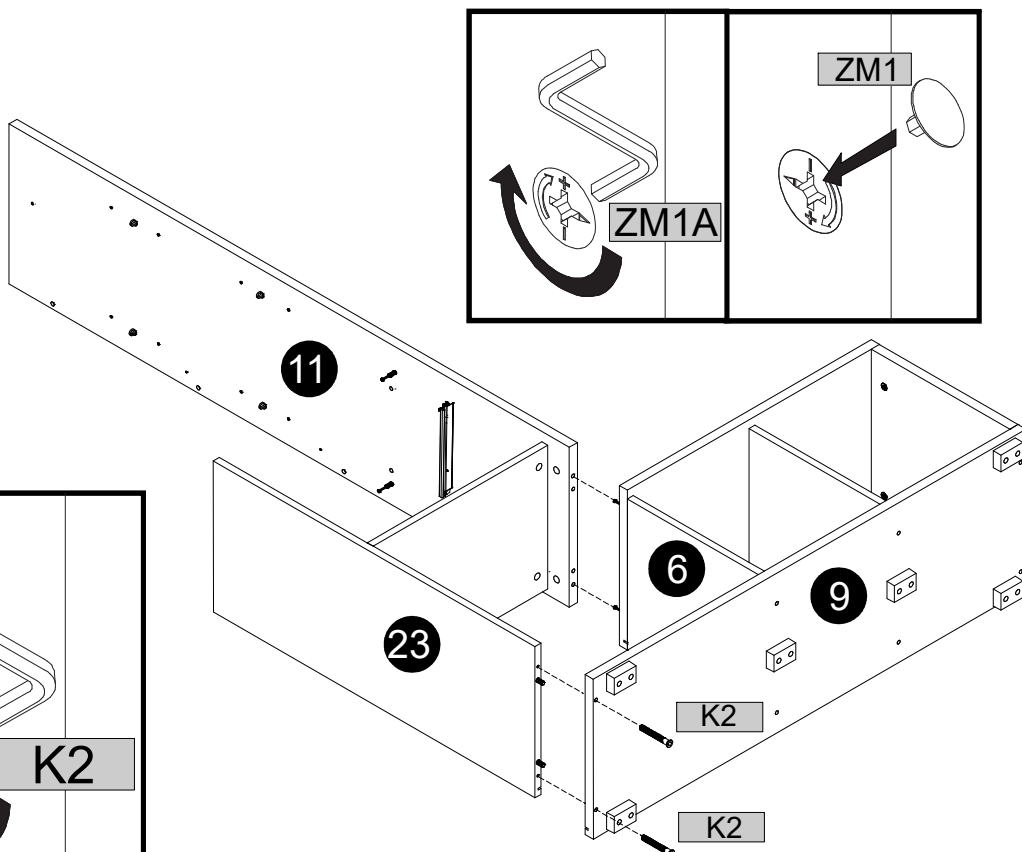
	2		1
ZM1		KK1	



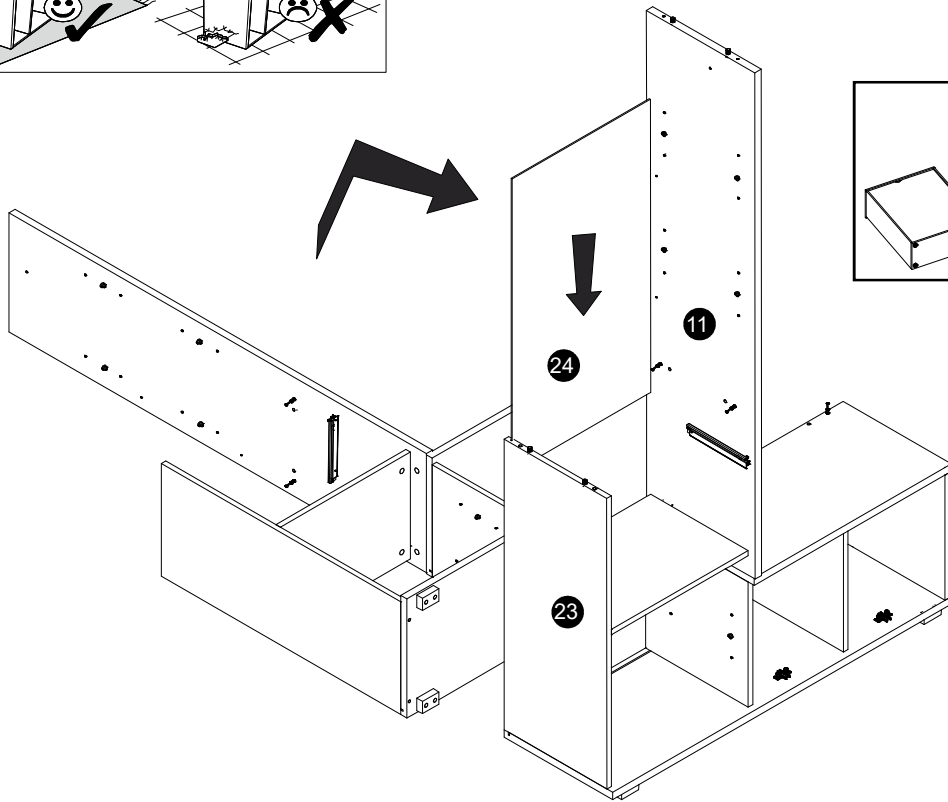
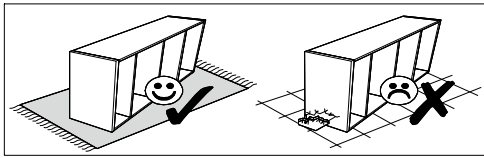
### 20



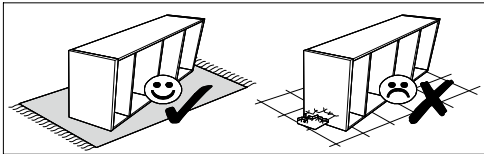
	2		1		2		1
K2		K1		ZM1		KK1	



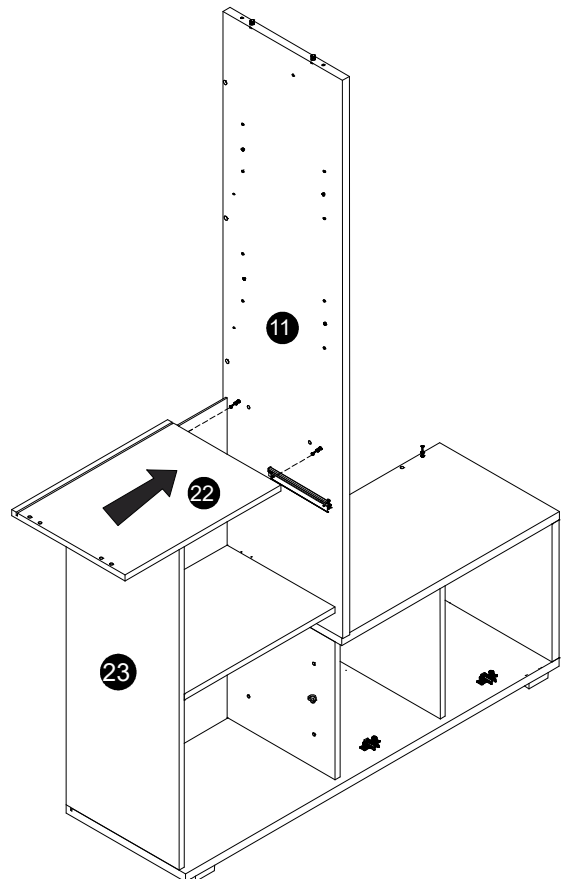
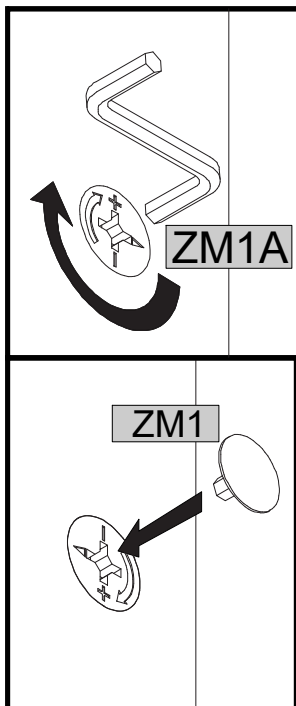
21



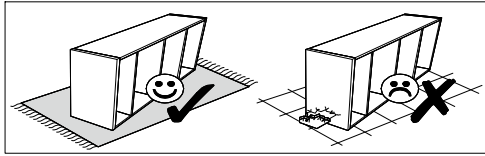
22



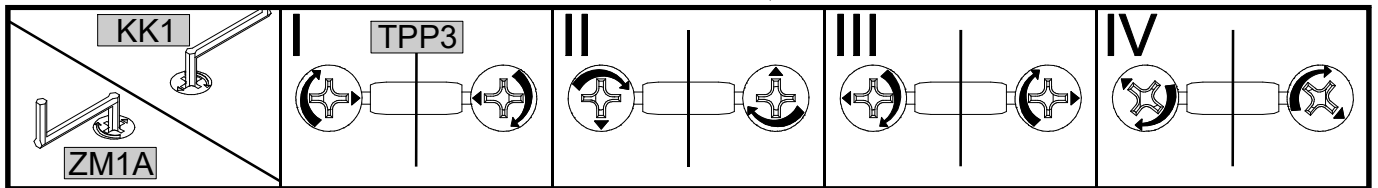
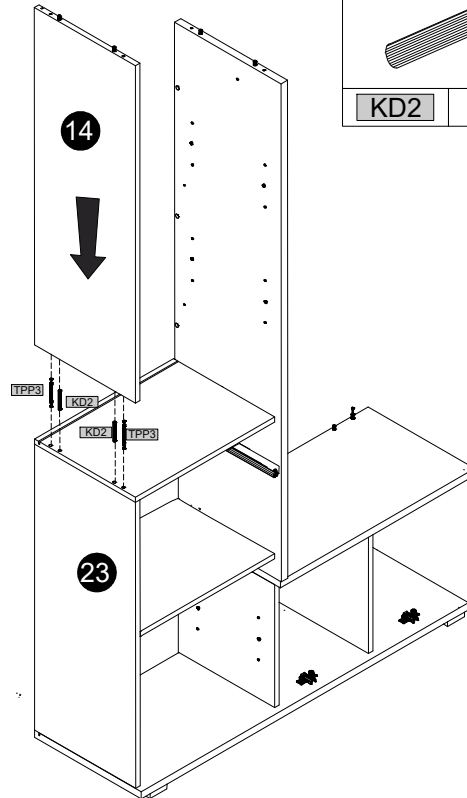
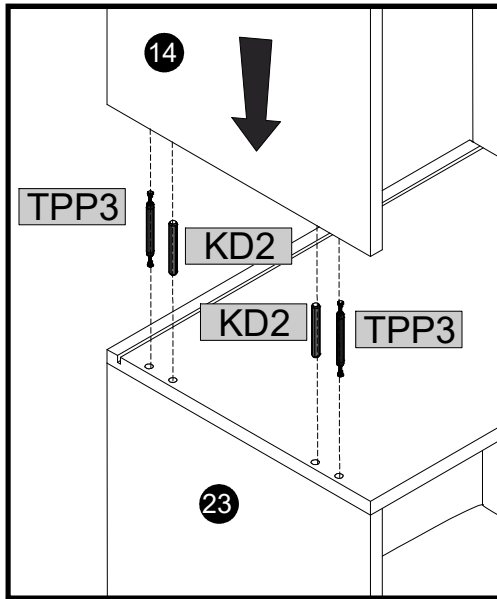
KK1	1
ZM1	2



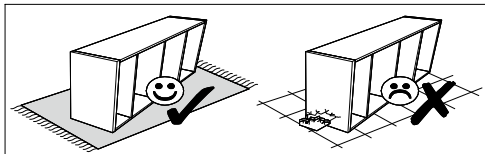
23



	8x60		L=86
KD2	2	TPP3	2

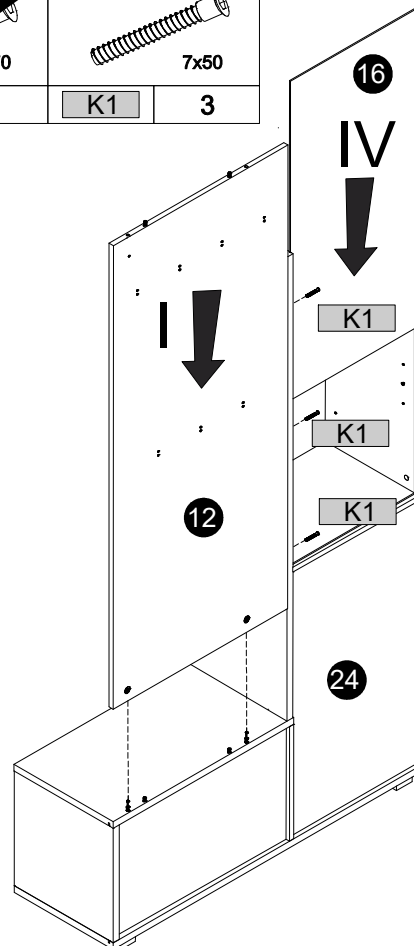
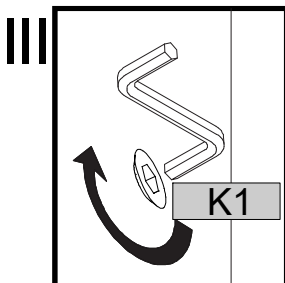
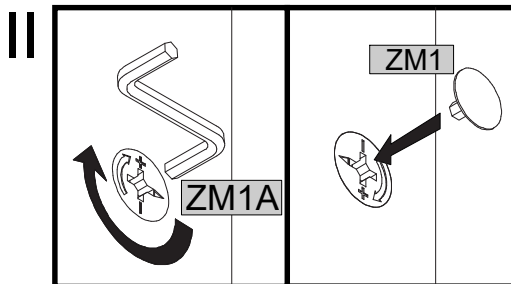


24

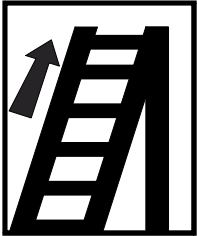
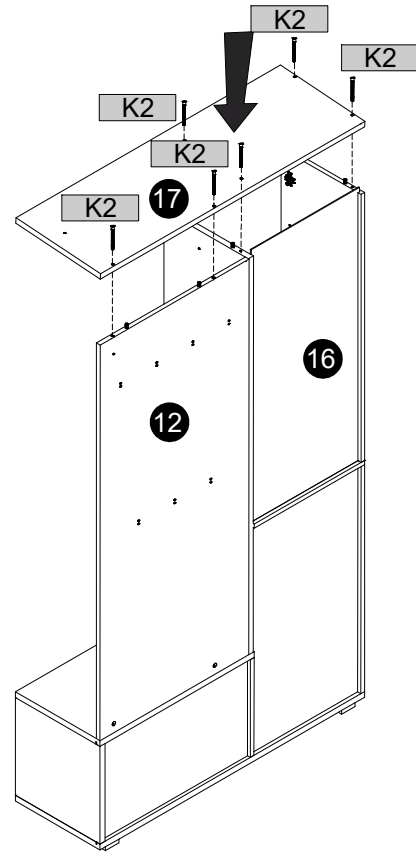
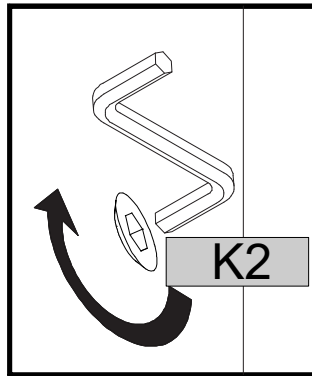
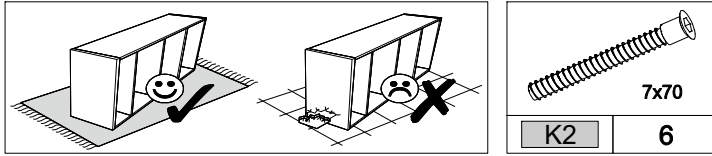


	7x70		7x50
K2		K1	3

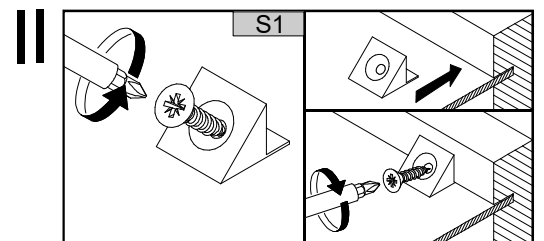
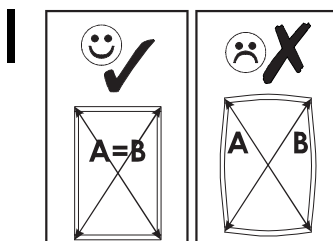
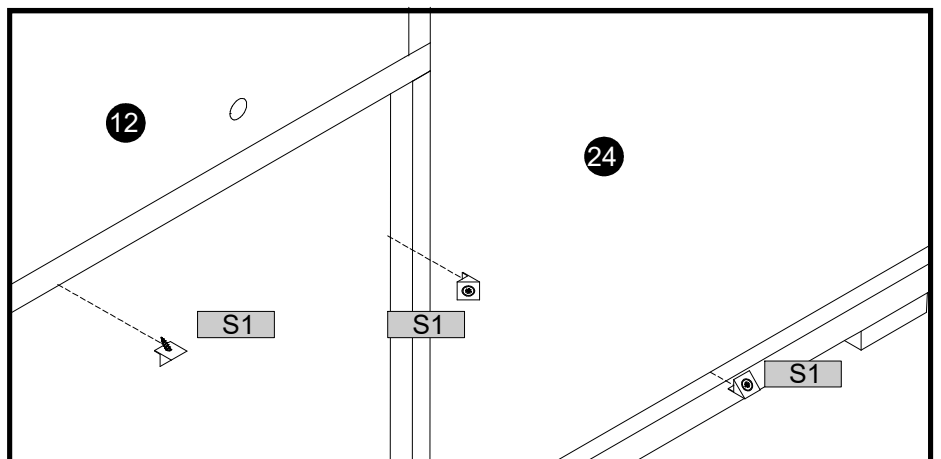
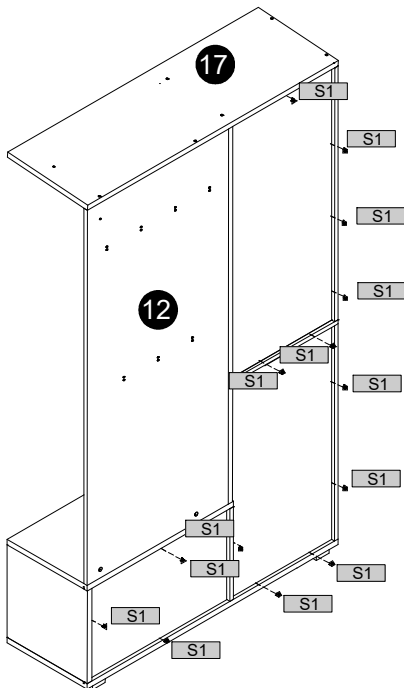
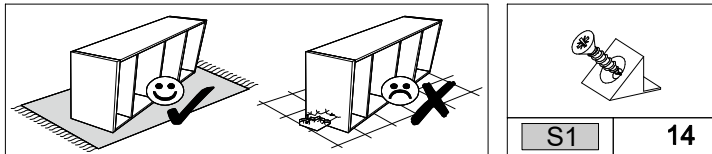
KK1	1	ZM1	2



25

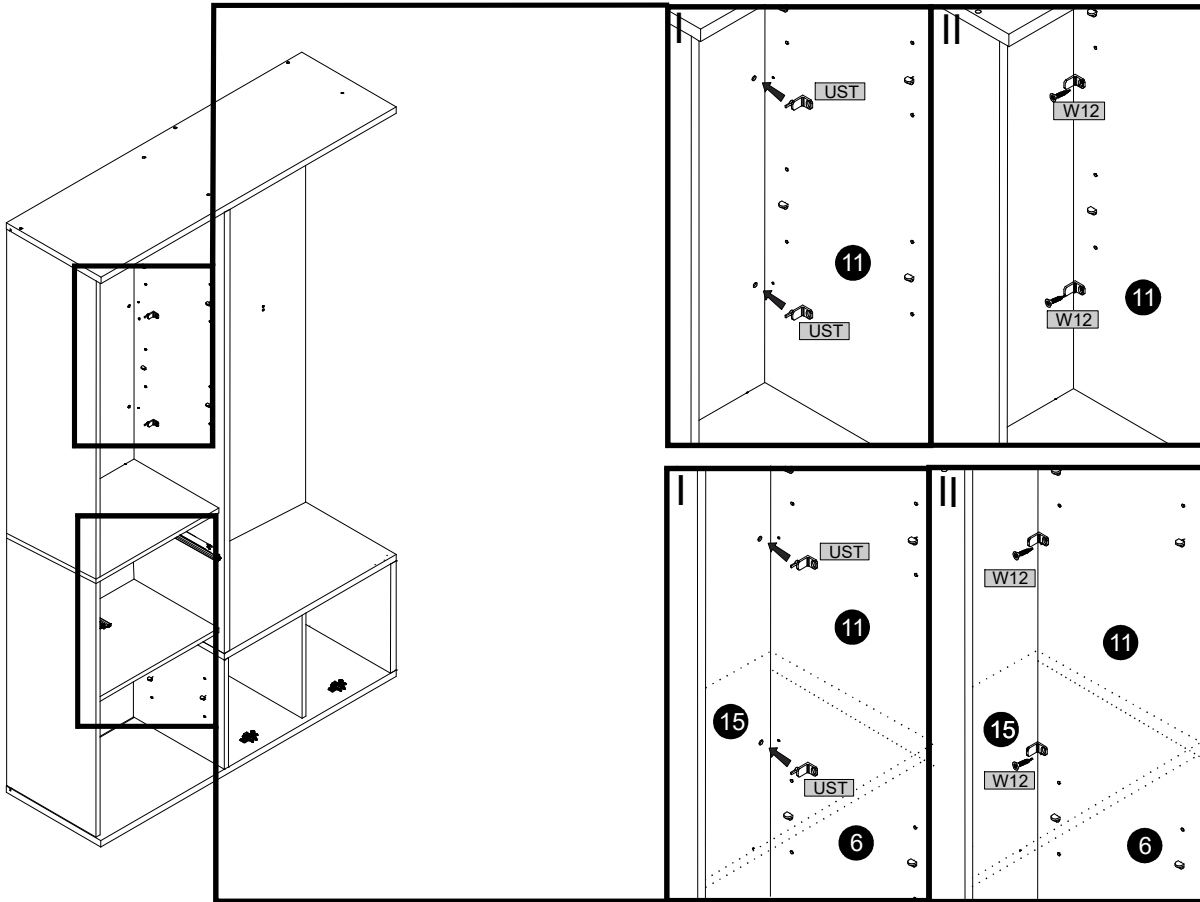
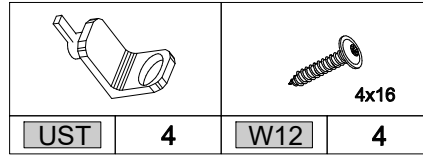
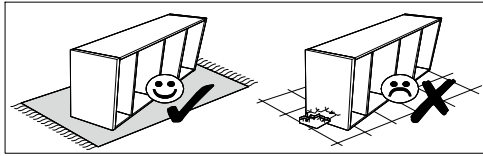


26

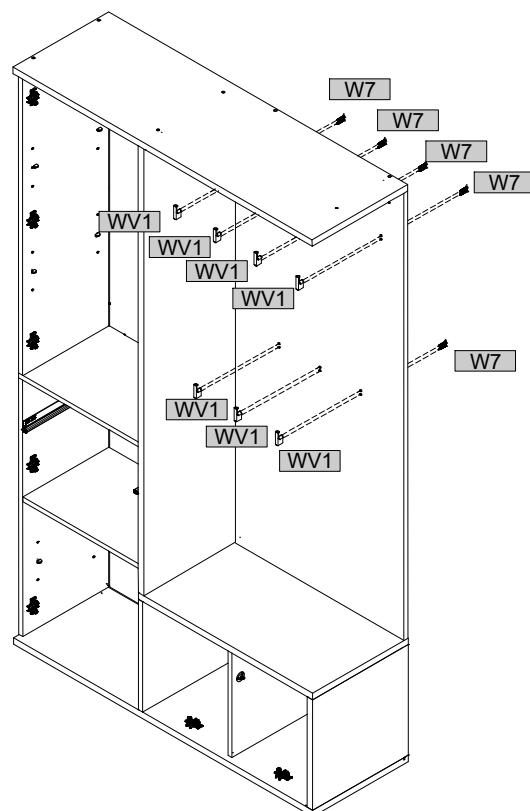
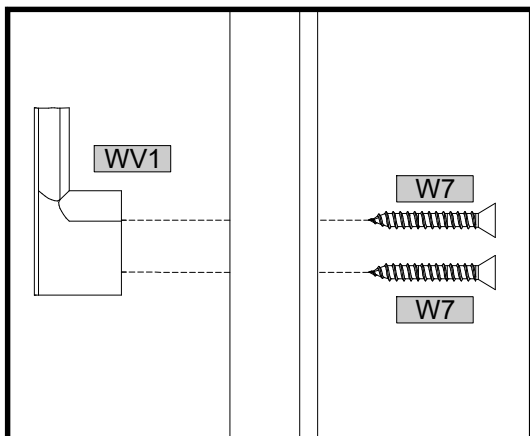
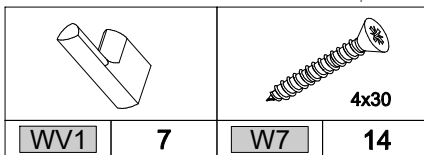
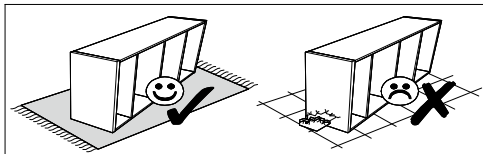




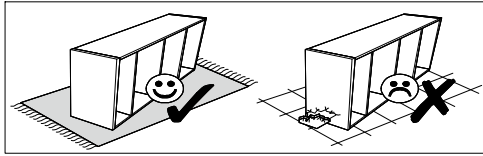
27



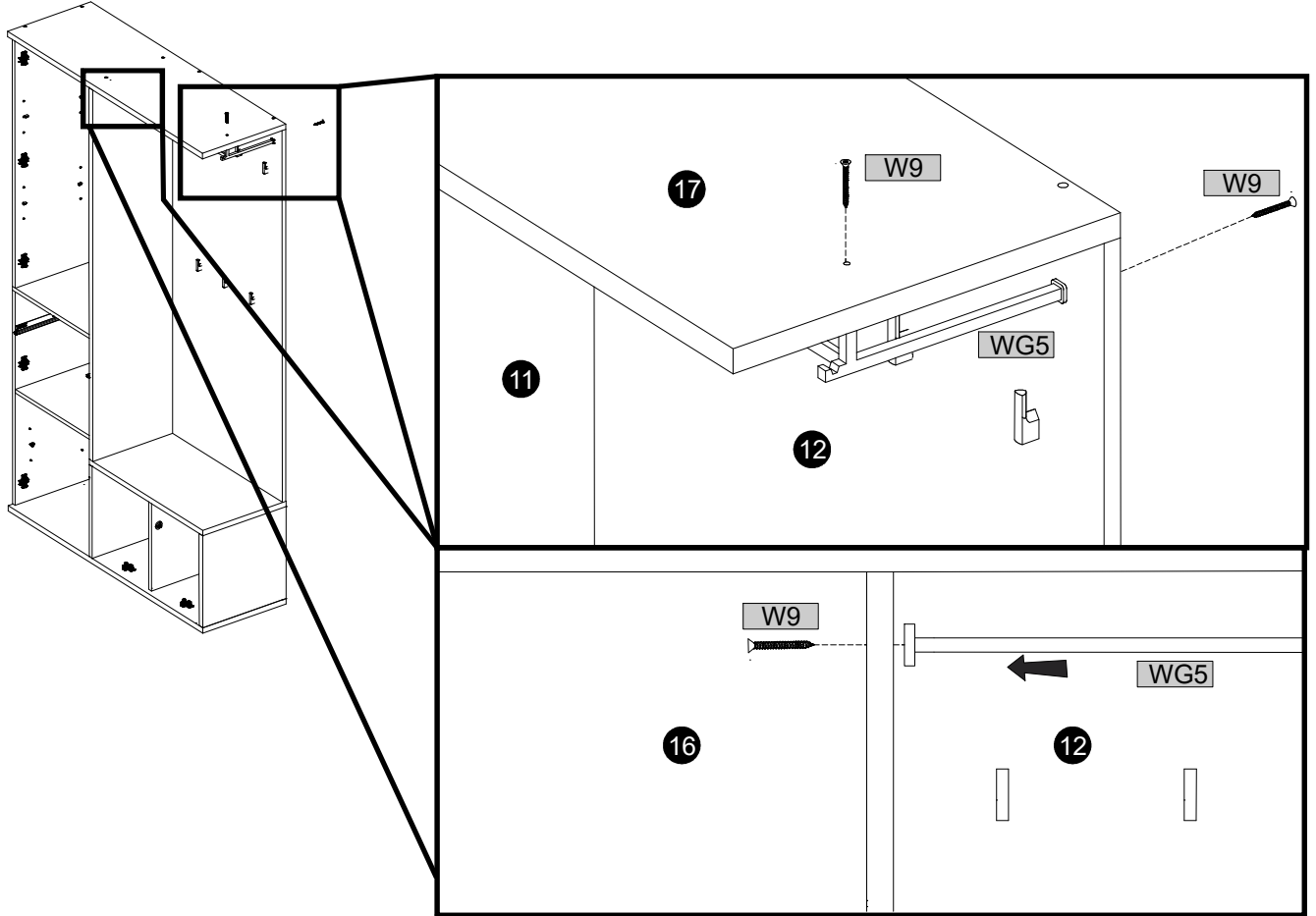
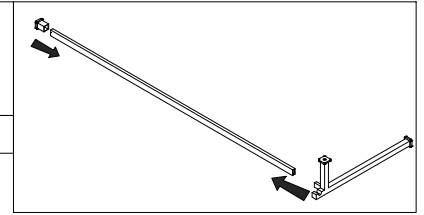
28



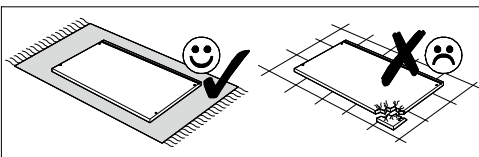
### 29



	4x40		
W9	3	WG5	1

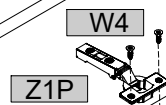
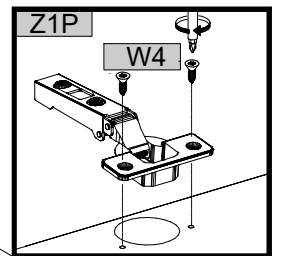
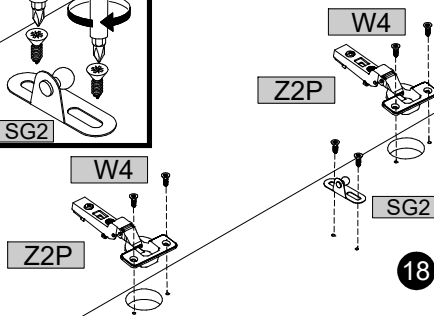
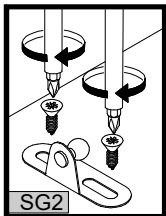


### 30



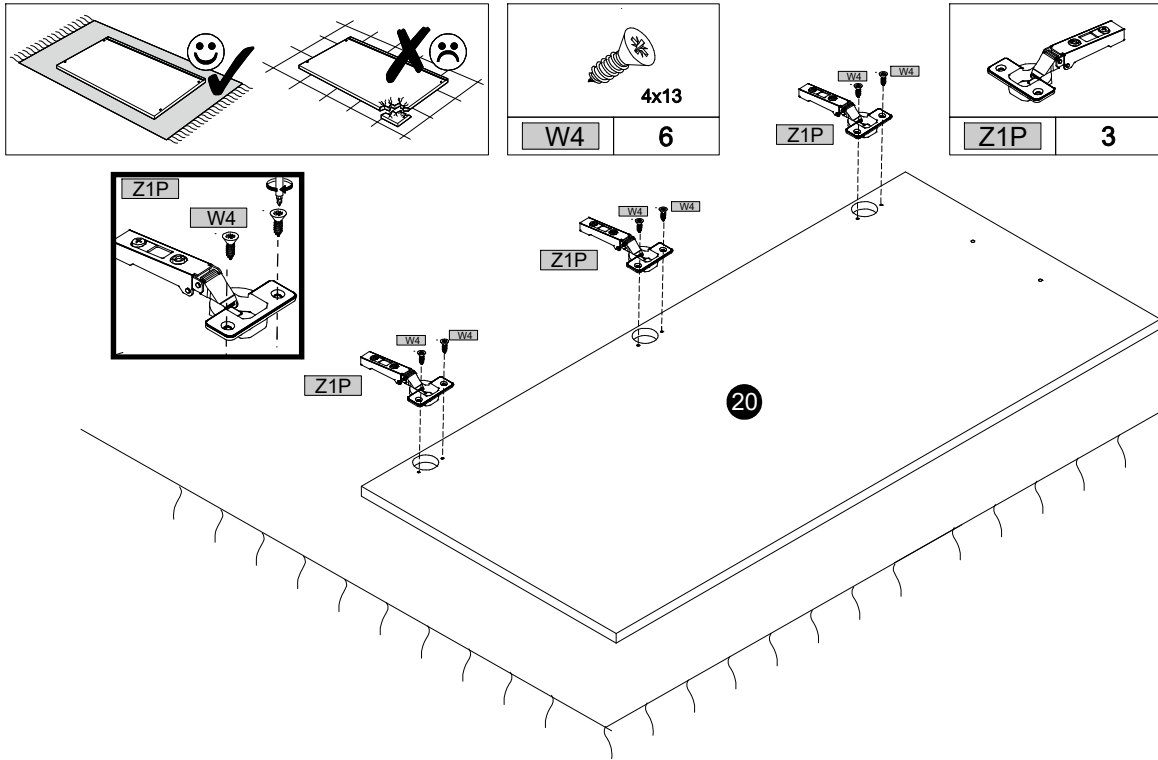
			4x13		
Z1P	2	W4	8	SG2	1

Z2P	2

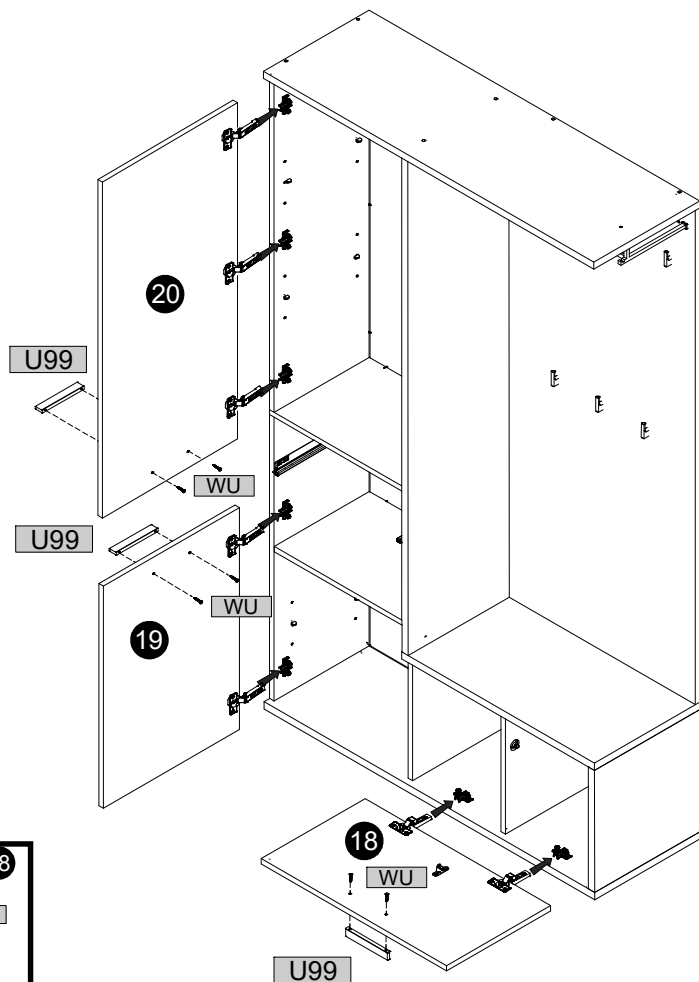
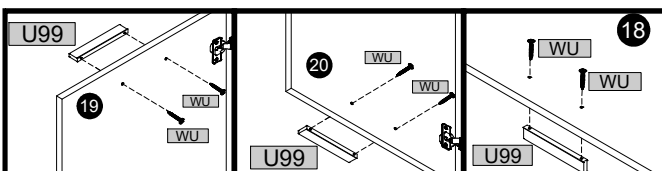
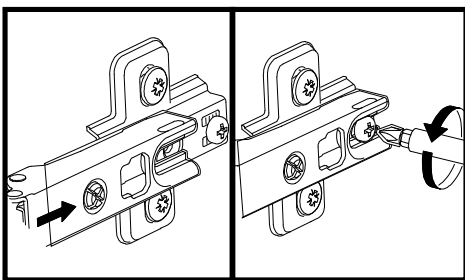
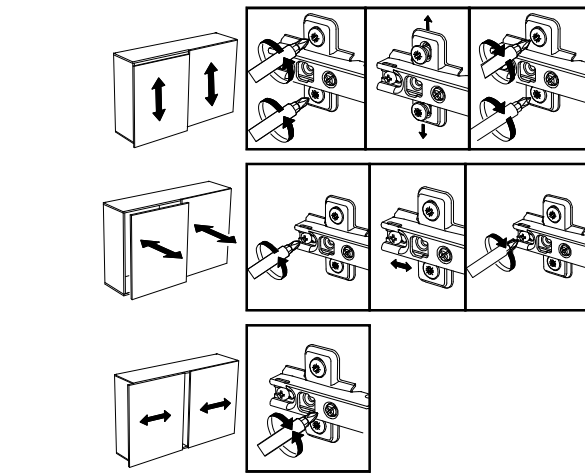
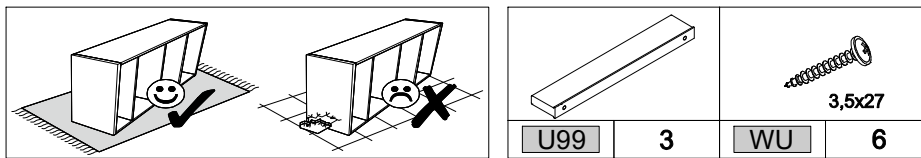


19

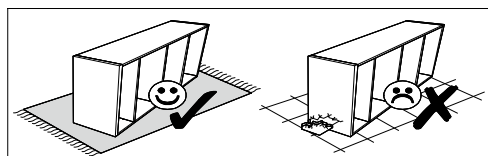
### 31



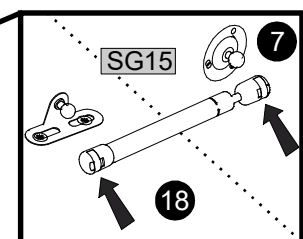
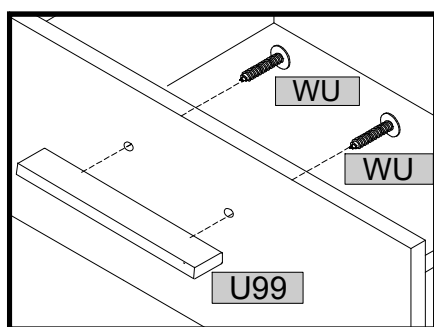
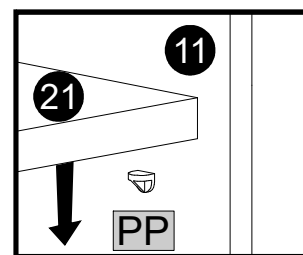
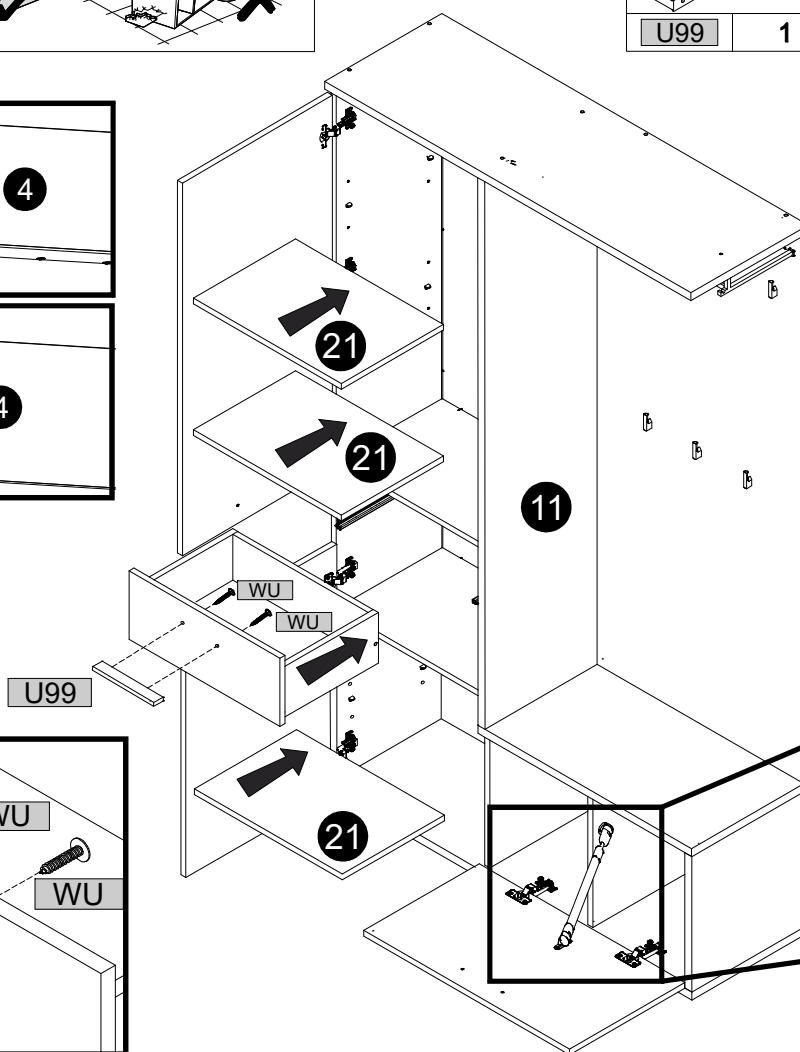
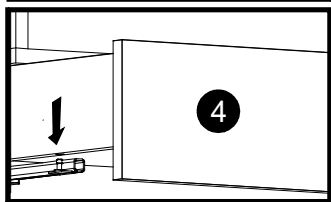
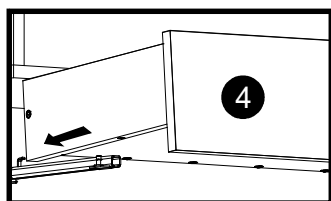
### 32



### 33



	1		2
		3,5x27	
			1



### 34

	2		2		4
		08x40		3,5x16	

